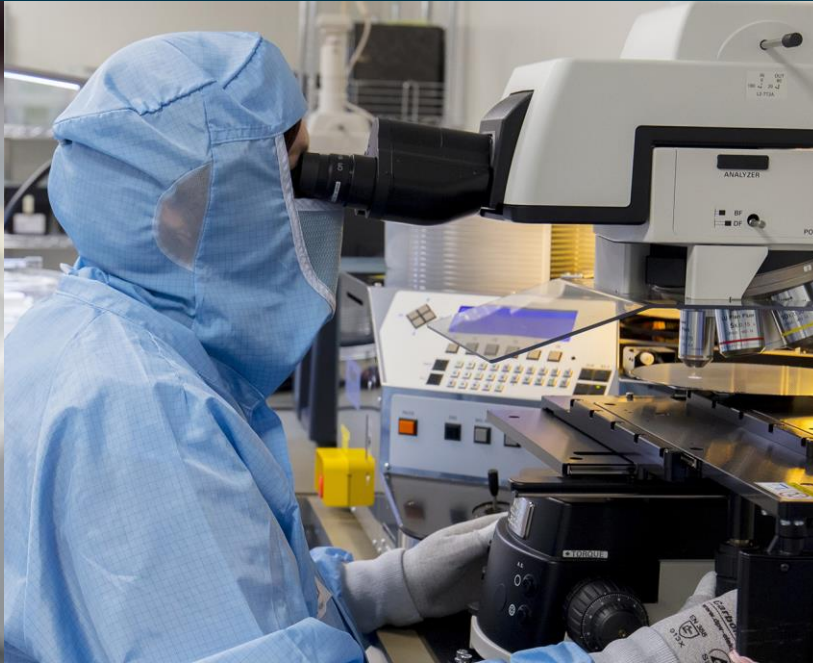
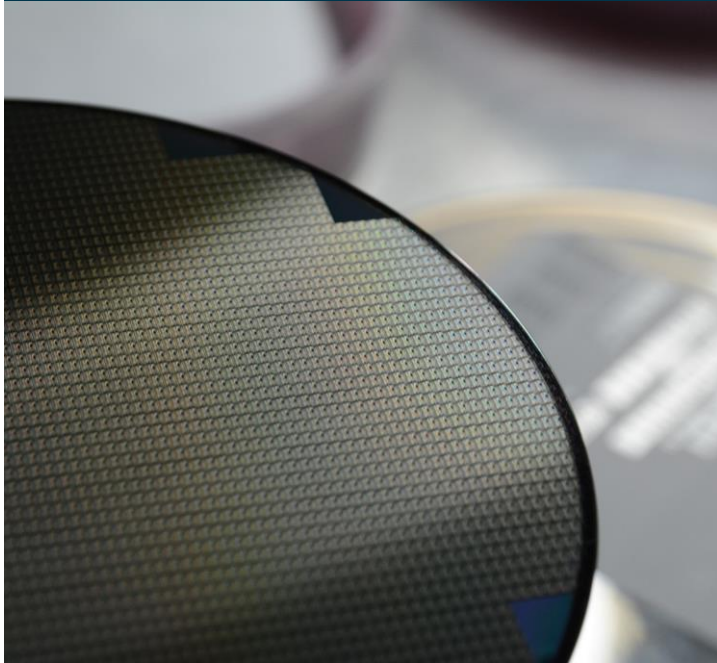


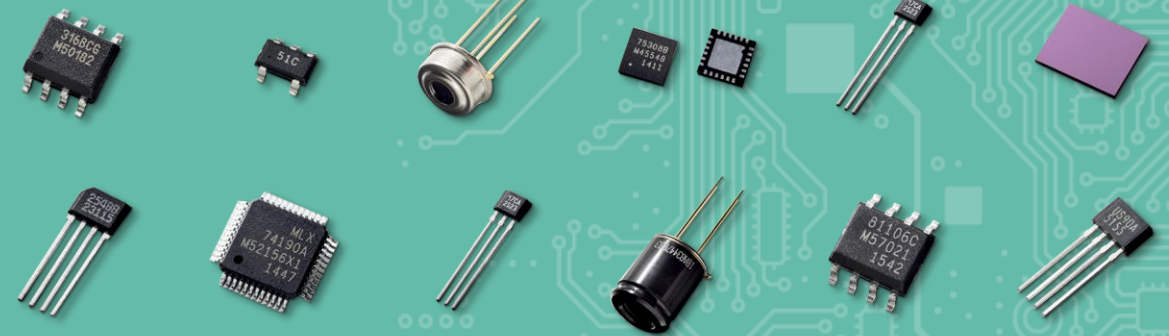


Presentation results Q1 2021

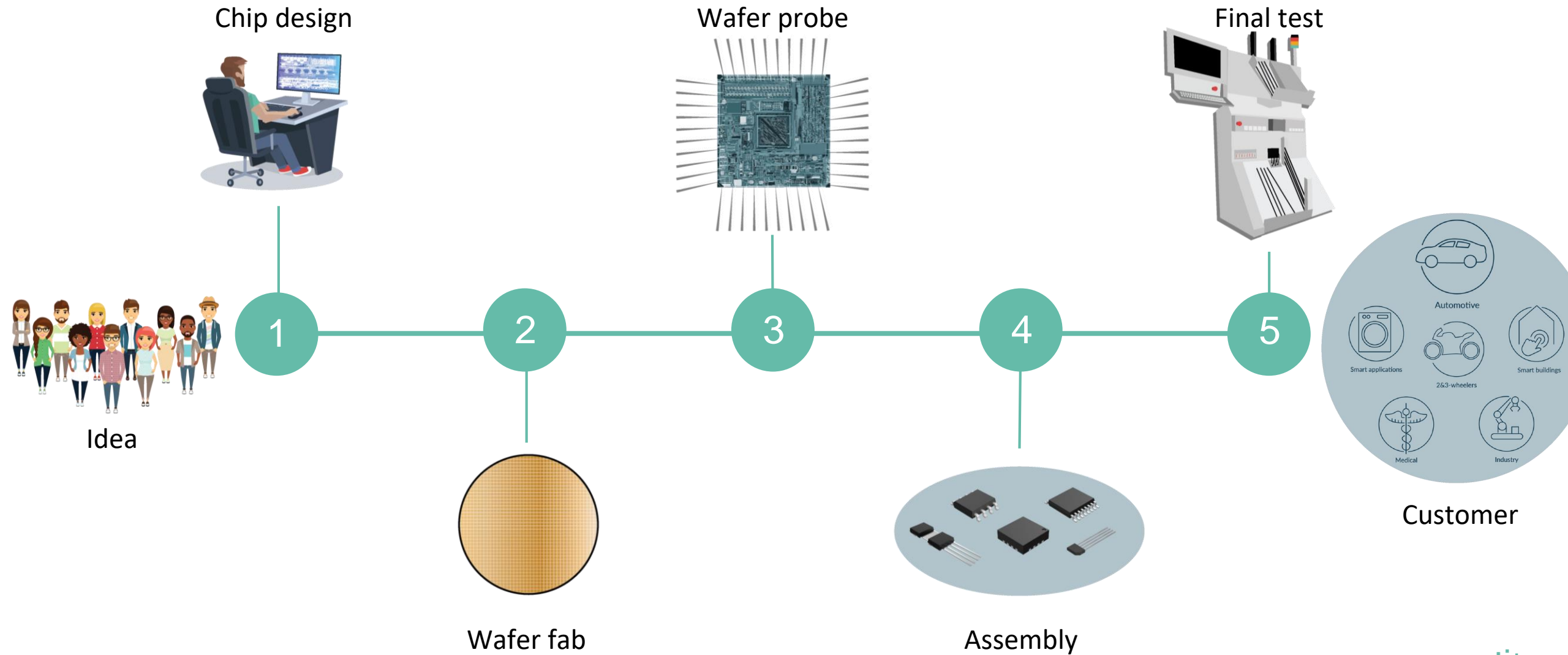
What do we do?



We create innovative micro-electronic solutions for the best imaginable future

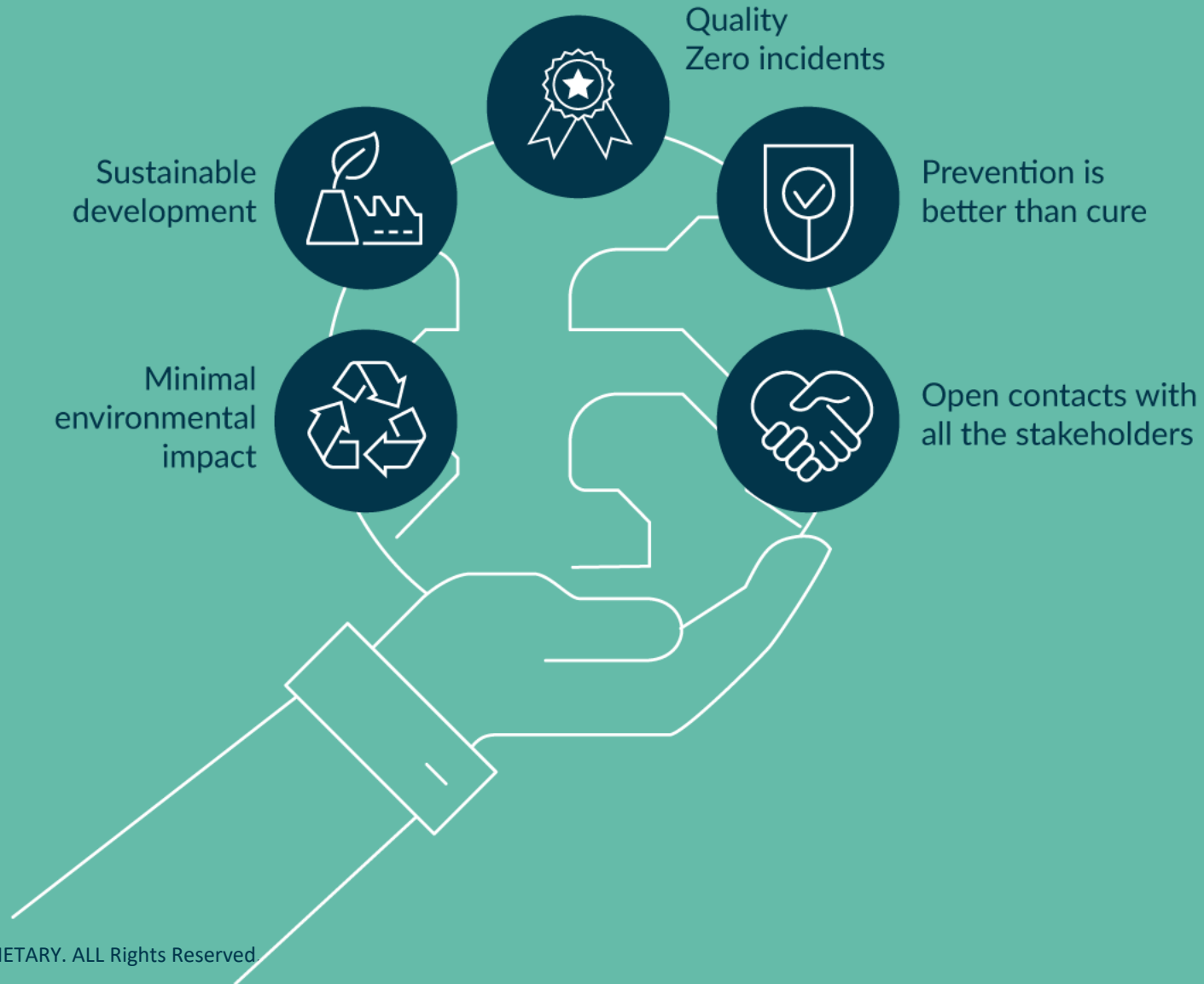


Process flow



SUSTAINABILITY AT HEART

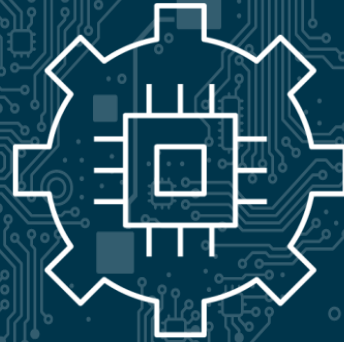
Our environmental policy is based on five principles



Melexis strategy



Focus on
innovation in
automotive and
adjacent
markets



Leadership in
***sensing and
driving solutions***
to our
customers'
advantage



Organic growth,
selective
acquisitions

Common denominator: sensing & driving is everywhere



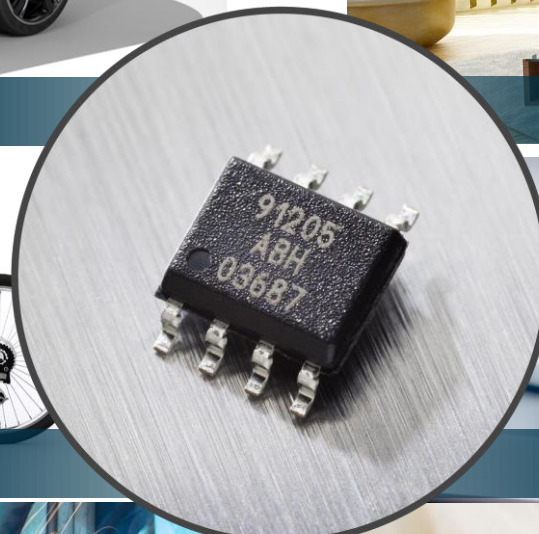
Automotive



Home



Motorcycles and e-bikes



Consumer



Industry



Healthcare

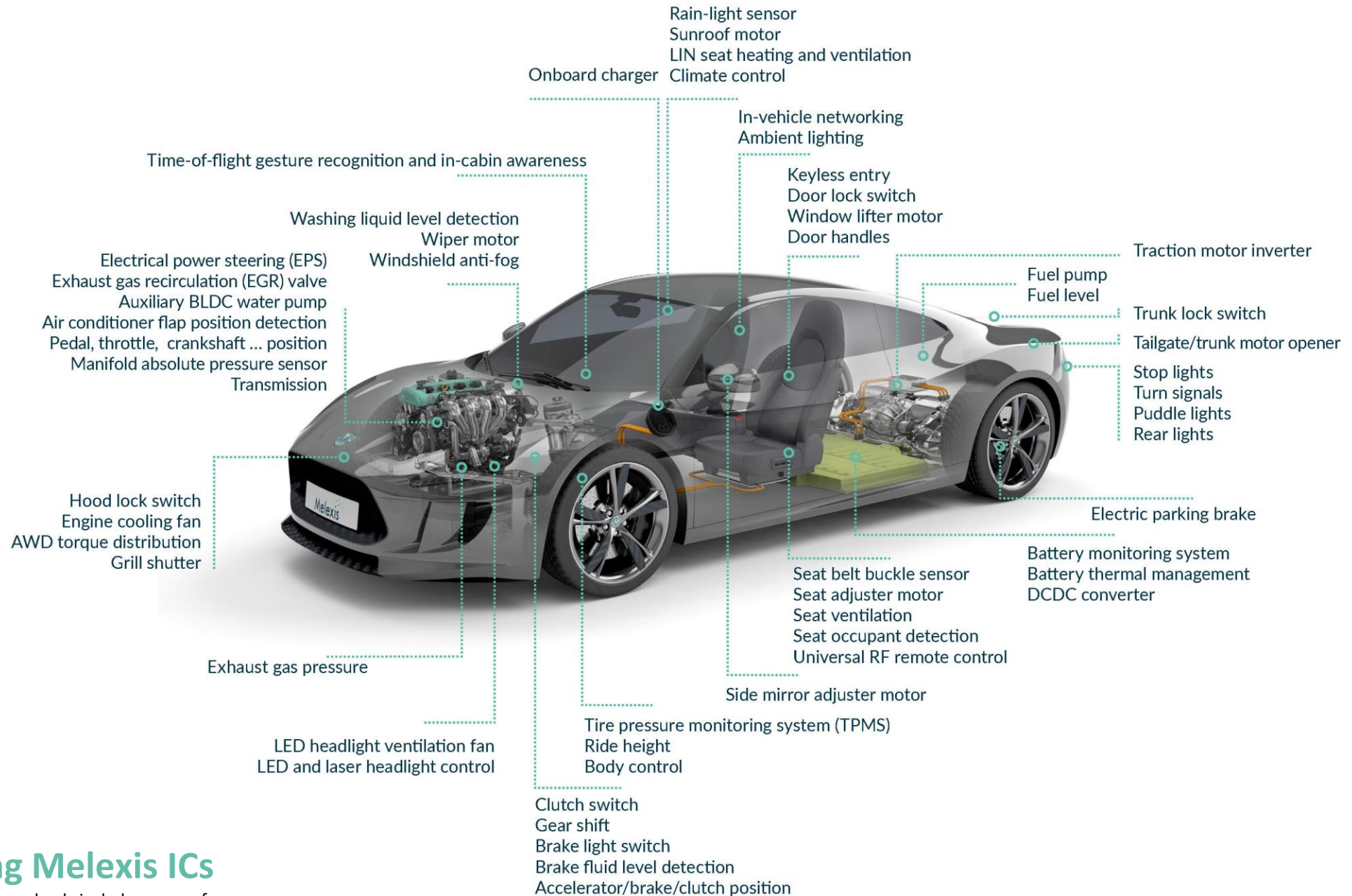
Melexis supplied > 1.3 billion ICs worldwide in 2020



- Magnetic position sensors • Pressure sensors
- Inductive position sensors • Tire monitoring sensors
- Current sensors • Temperature sensors
- Latch & switch • Optical sensors
- Embedded drivers • Sensor interfaces
- Smart drivers • Embedded lighting



13 chips in every new car



Applications containing Melexis ICs

Disclaimer: Please note this list is not exhaustive and only includes some of the most common applications containing Melexis ICs.

Approximately 1500 people on 3 continents



Sales & Applications

Belgium – Ieper, Tessenderlo
Greater China – Shanghai, Shenzhen
France – Grasse, Paris
Germany – Erfurt, Dresden
Japan – Yokohama
USA – Detroit, San Jose
South Korea – Seoul
Switzerland - Bevaix



Manufacturing

Belgium – Ieper
Bulgaria – Sofia
France – Corbeil-Essonnes
Germany – Erfurt
Malaysia – Kuching



Research & Development

Belgium – Ieper, Tessenderlo
Philippines – Manila
Bulgaria – Sofia
Switzerland - Bevaix
France – Grasse, Paris
Ukraine – Kiev
Germany – Erfurt, Dresden, Düsseldorf

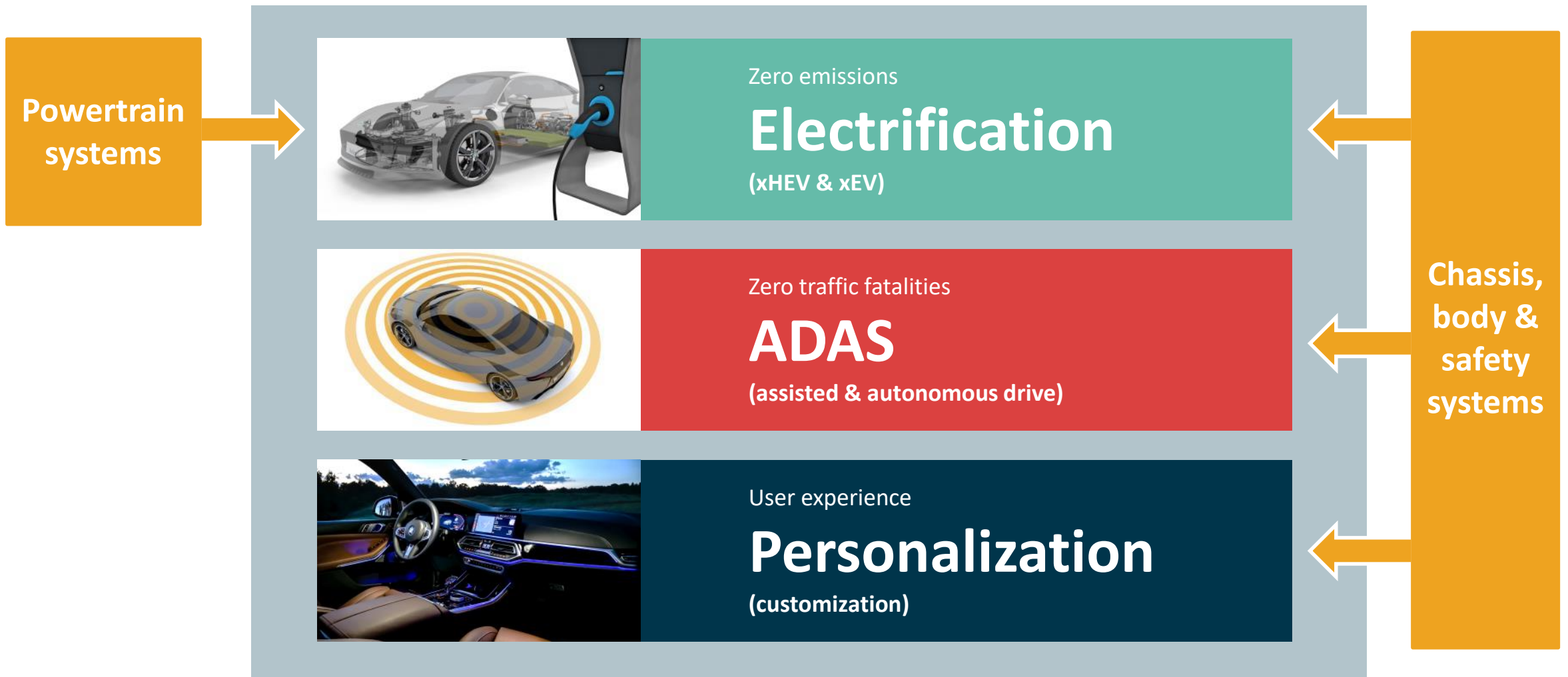


Melexis vs Automotive Trends

Melexis enables
edge sensing & edge driving

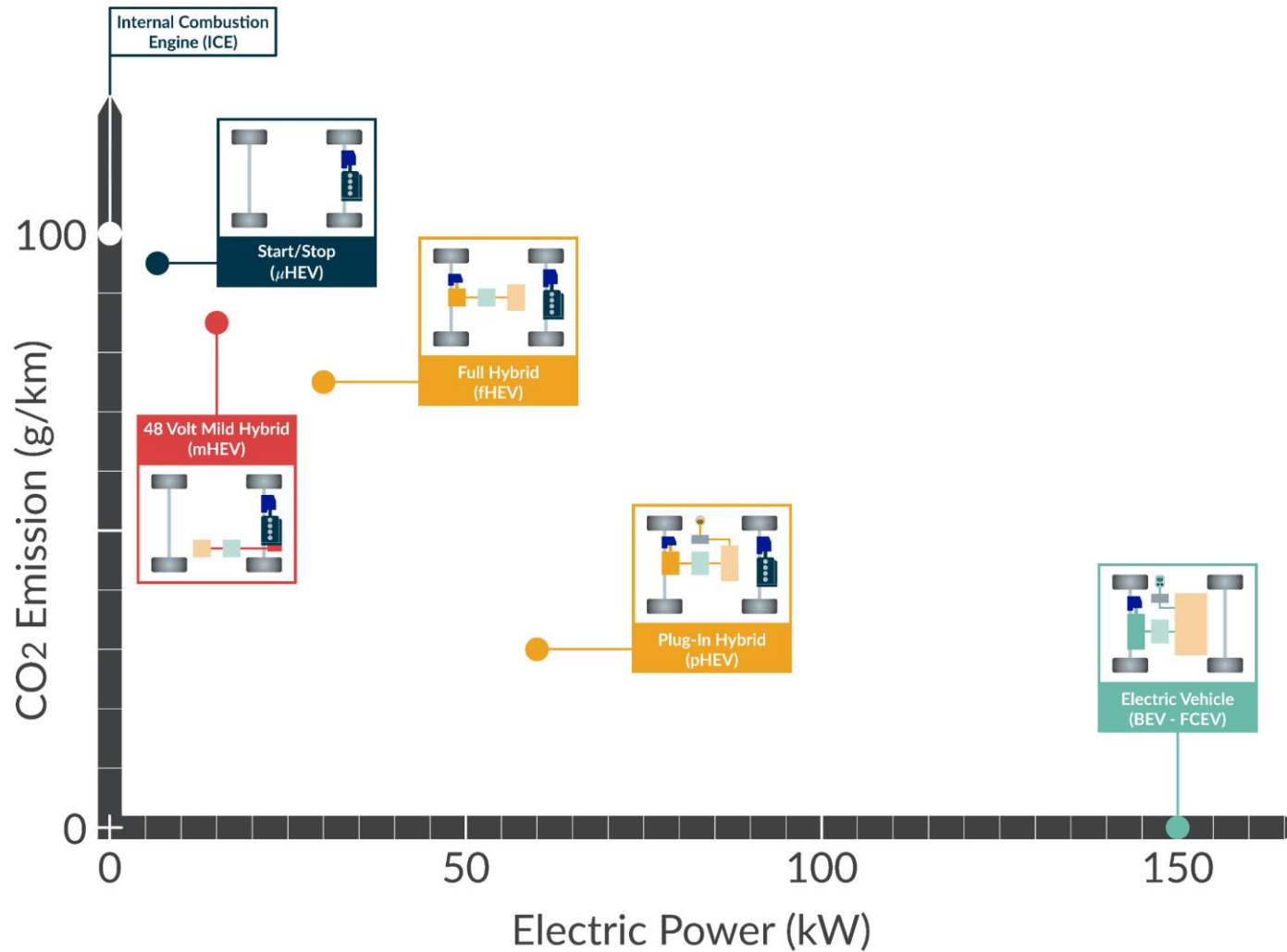
Melexis engineers small, smart
Sensing and **Driving** nodes
supporting
in-vehicle edge computing systems

Melexis vs. automotive trends



Powertrain Systems

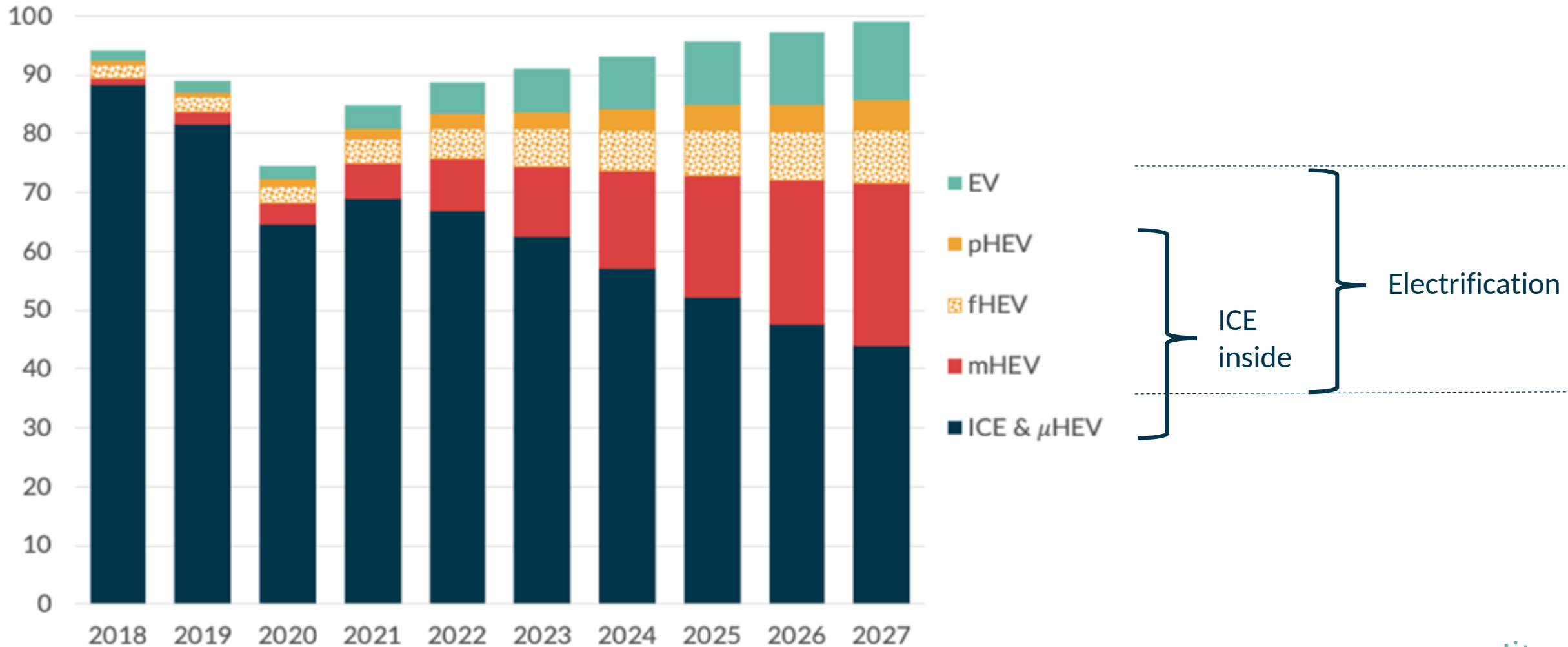
Levels of Electrification



Global vehicle production (million units)

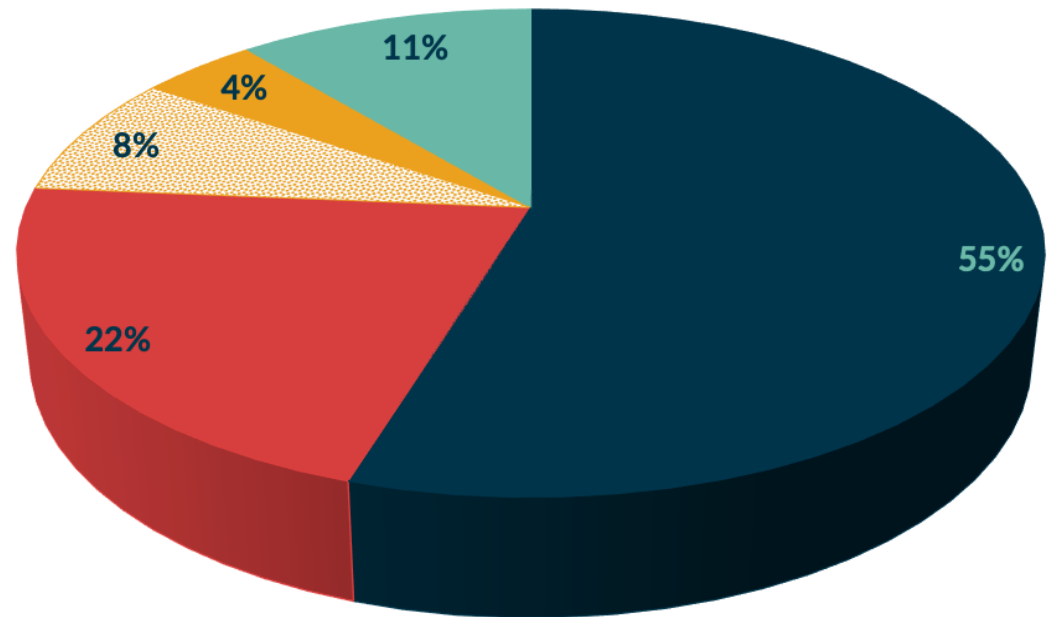
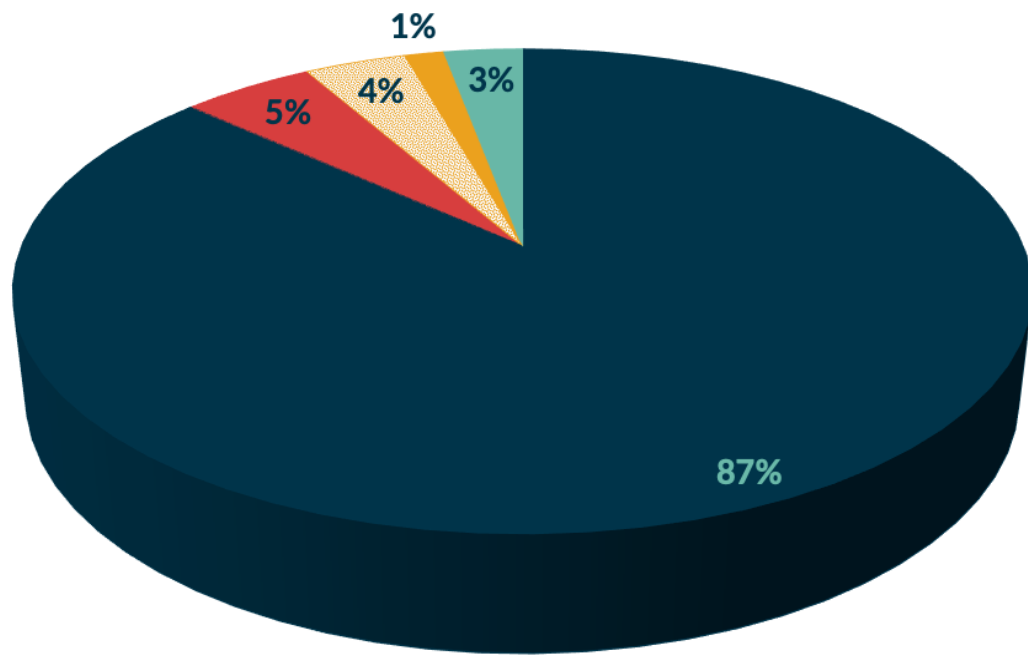


Electrification – Segmentation – Market Split



Powertrain split – 2020 & 2025

Electrification – Segmentation – Market Split



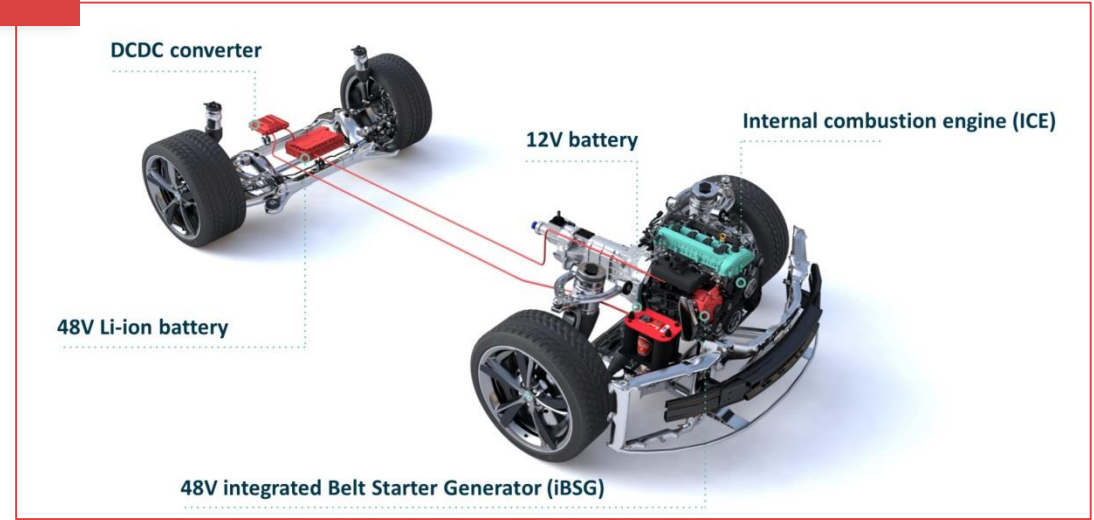
■ ICE & μHEV ■ mHEV ■ fHEV ■ pHEV ■ EV



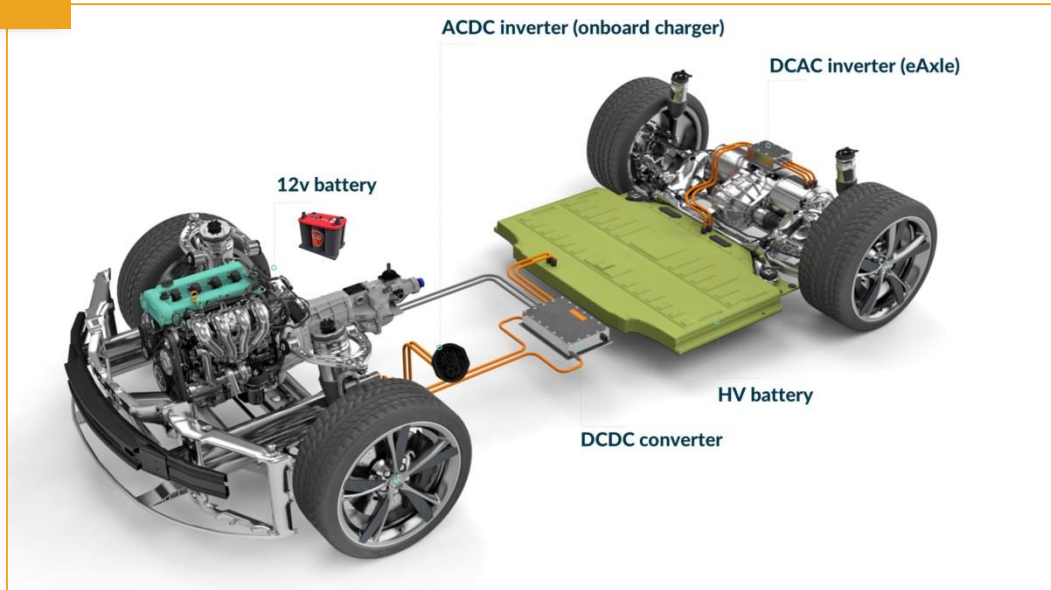
Internal Combustion Engine (ICE + uHEV)



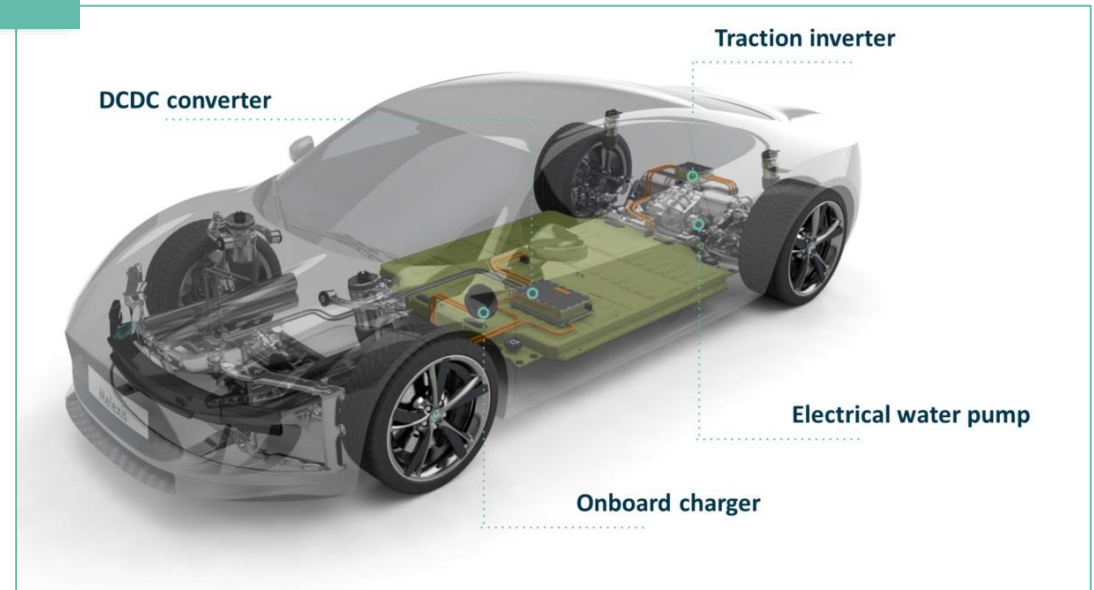
48 Volt Mild Hybrid (mHEV)



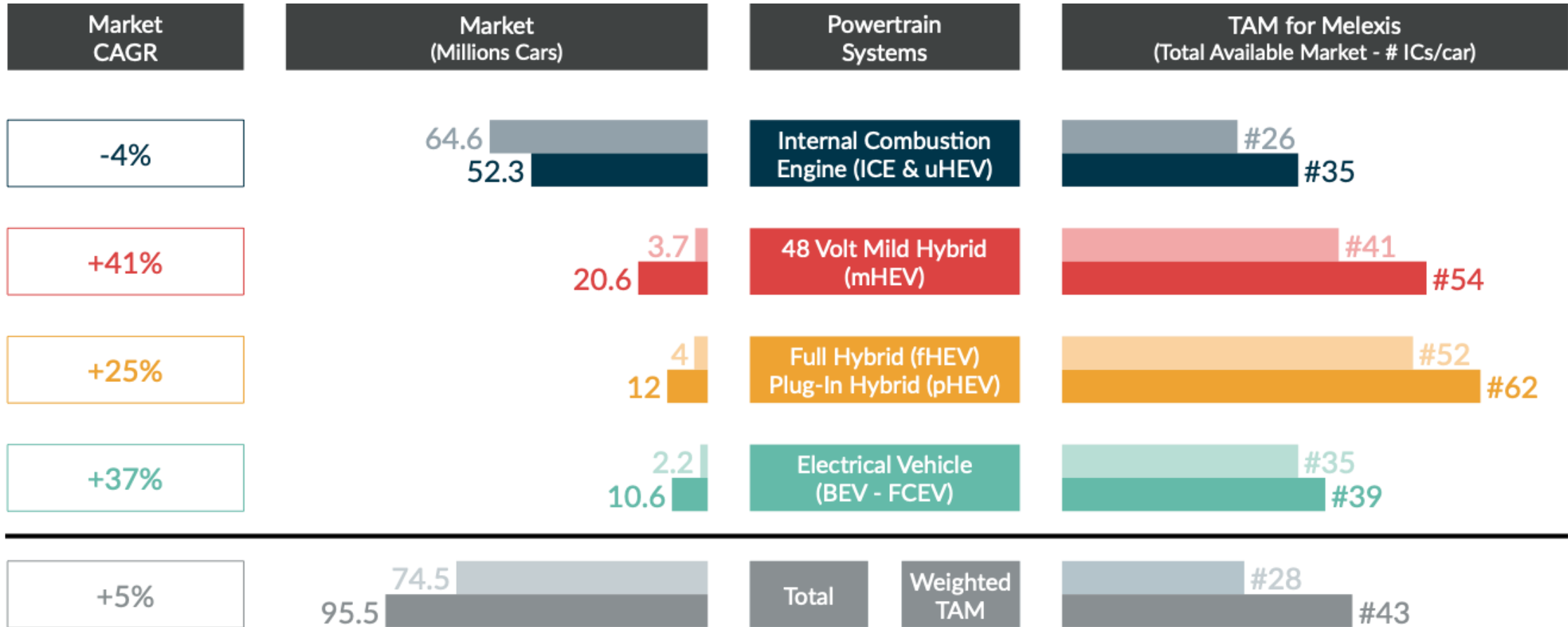
Full Hybrid (fHEV) - Plug-In Hybrid (pHEV)



Electrical Vehicle (BEV – FCEV)



Powertrain Systems



2020 
2025 

Chassis

Braking – Steering – Suspension



Body

Lighting – HVAC - Others



Safety

(Passive)

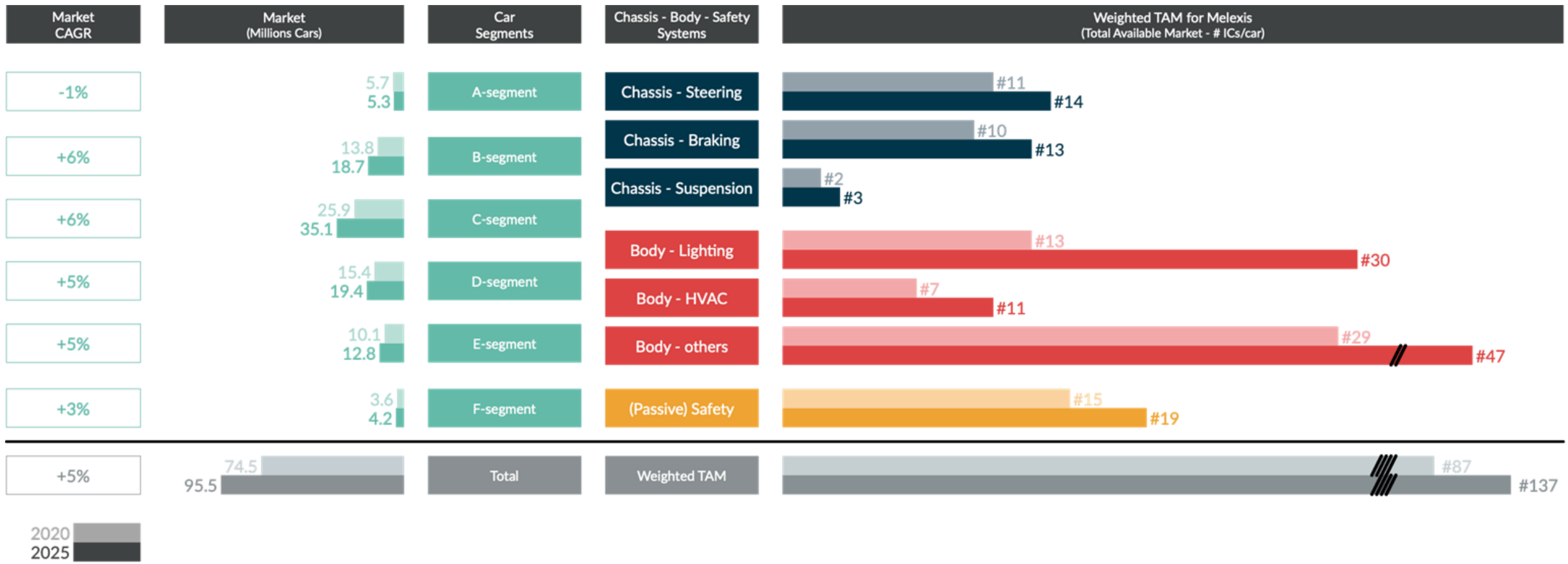


Source visuals: BMW

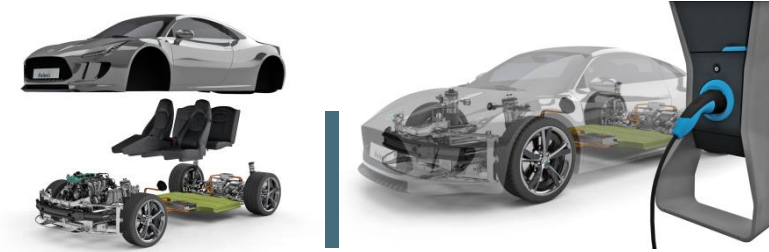
<https://www.autozeitung.de/klimaanlage-auto-wartung-funktion-187651.html>
<http://fertyimg.pw/Cremallera-de-direccin-hidraulica-Nissan-Tecnologia-t.html>



Chassis – Body – Safety Systems



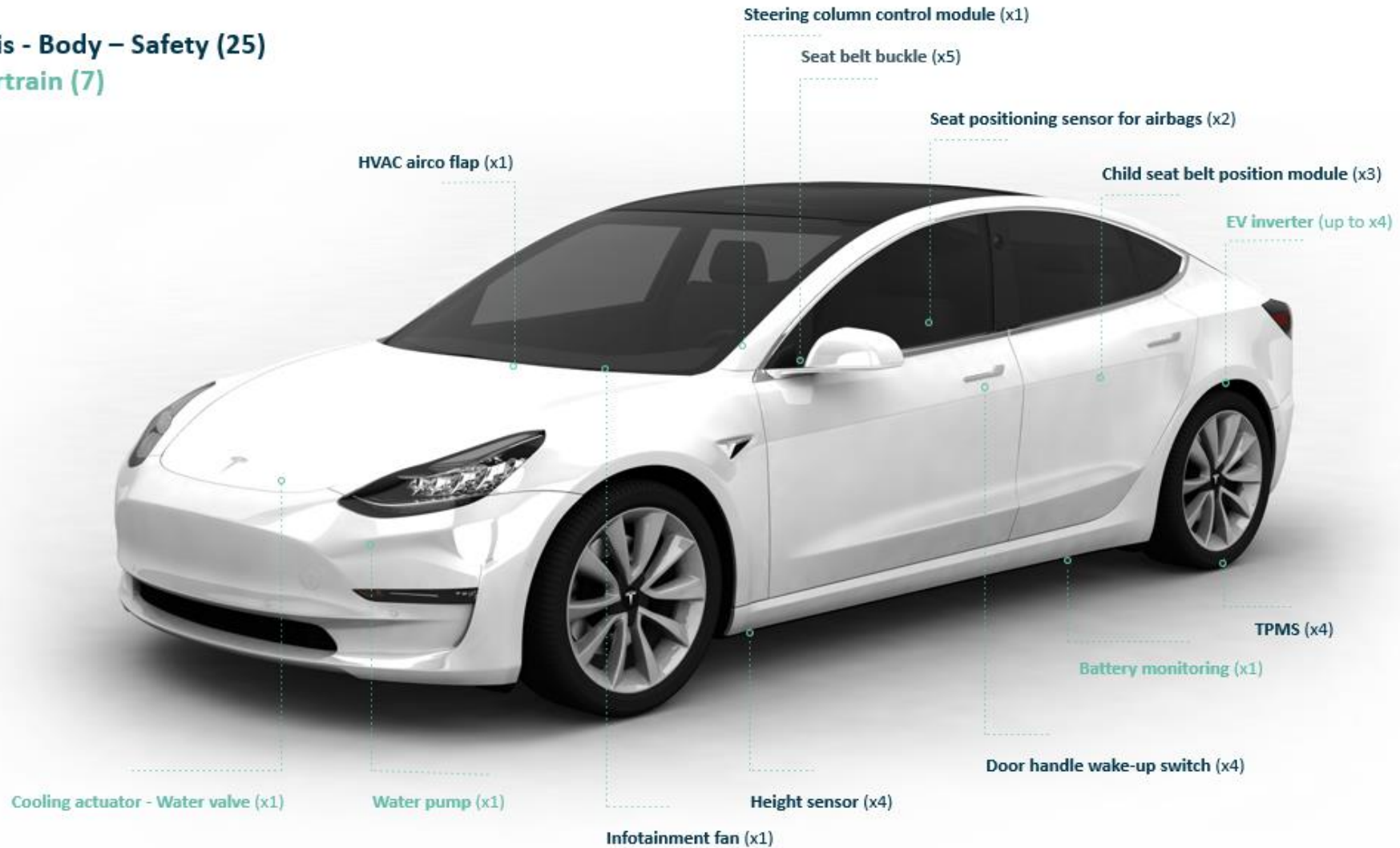
Melexis in automotive



Tesla Model 3

* Chassis - Body – Safety (25)

* Powertrain (7)



Melexis Smart Life – beyond automotive



Alternative Mobility

2–3 wheelers, micro-mobility, micro-delivery

Computing & networking

Cooling & power management



Robotics

Automation, social interaction, assisting

Carbon-neutral society

Smart appliances, smart buildings, non-fossil energy, smart metering



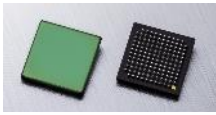
Well-being

Health, medical, wearable, gaming



Milestones

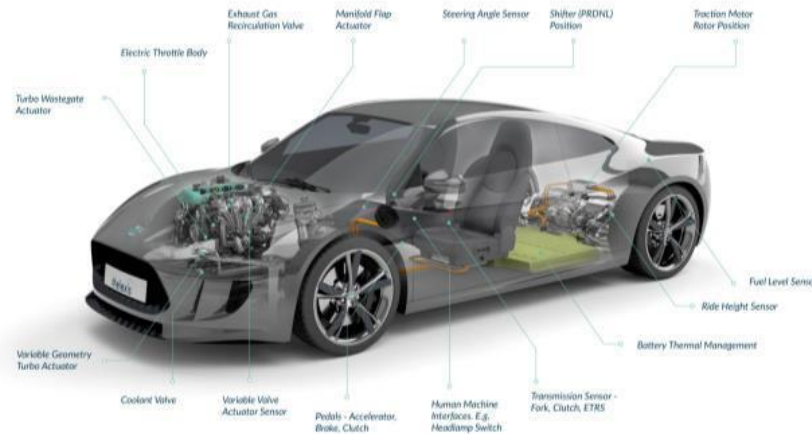
**1 TOF 3D by Melexis
MILLION
SENSOR ICs SHIPPED**



**1 Triaxis[®] by Melexis
BILLION
SENSORS SHIPPED**



**SIL READY
BY MELEXIS**



**2 Melexis
BILLION
SWITCHES SHIPPED**



Evolution financials 2000-2021

Turnover

Q1 2021: 155.6 mln EUR

FY 2020: 507.5 mln EUR

Gross profit margin

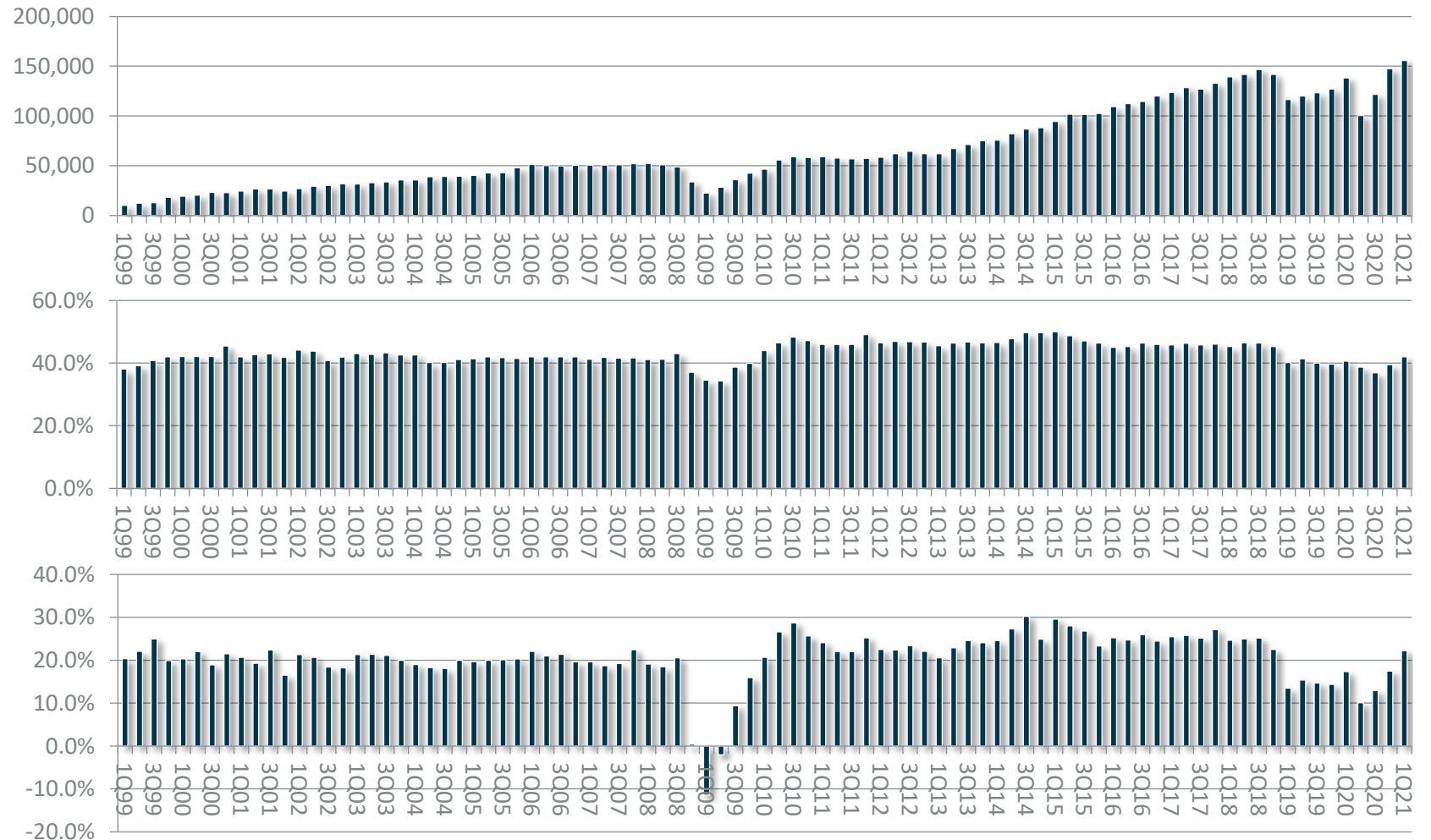
Q1 2021: 42.0%

FY 2020: 39.0%

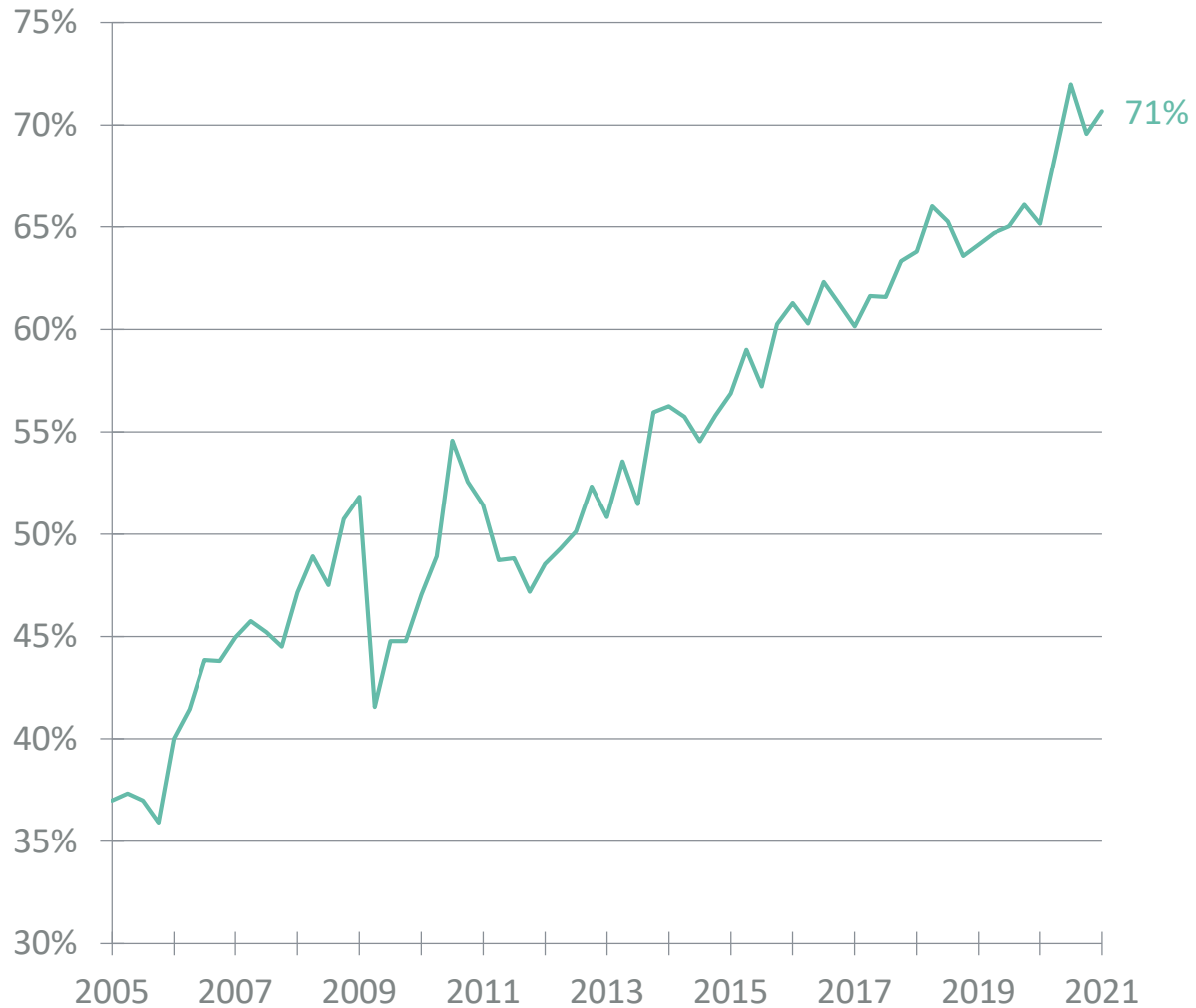
Operating margin

Q1 2021: 22.2%

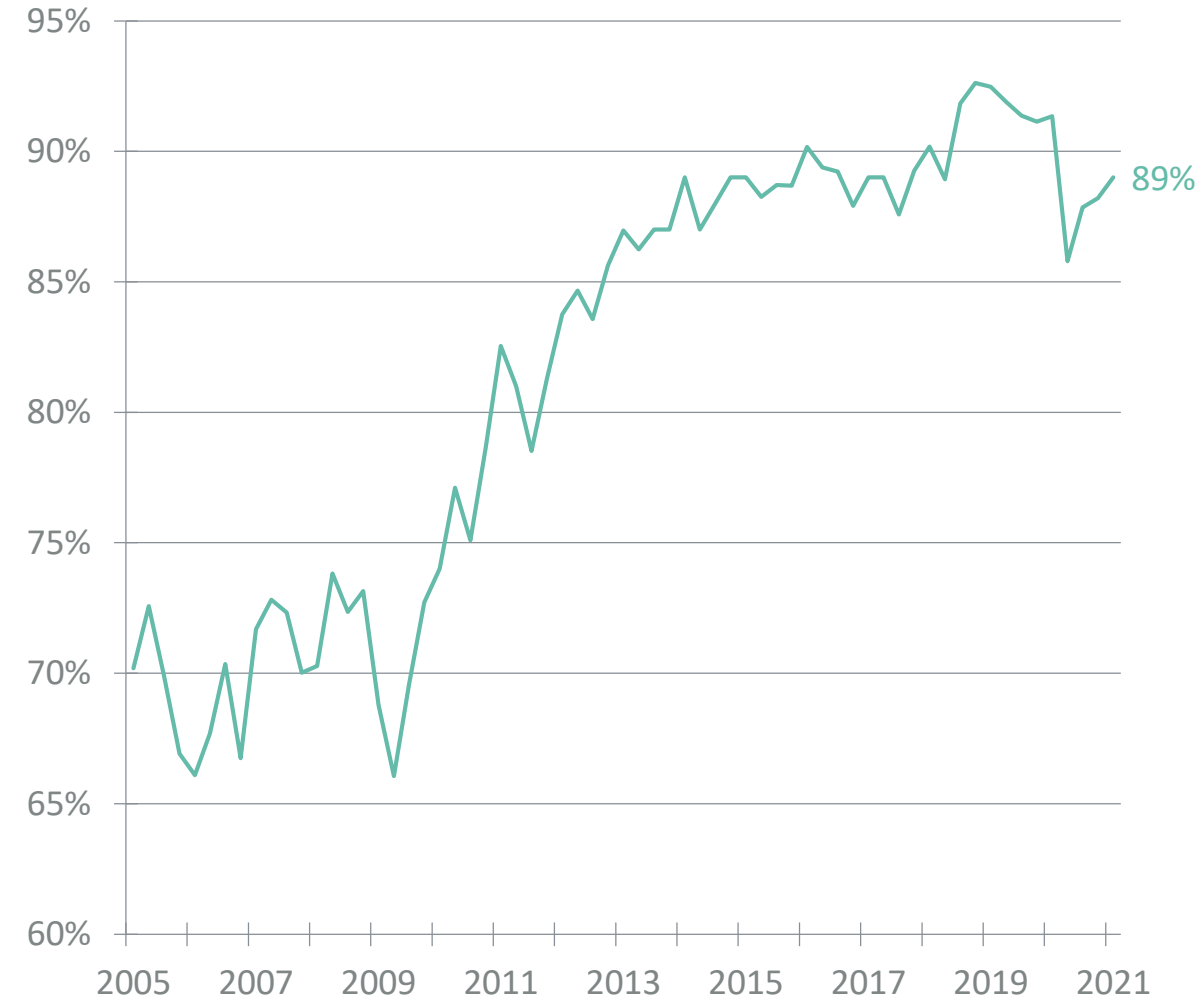
FY 2020: 14.9%



% ASSP sales



% automotive sales



Q1 2021 results at a glance

Sales
155.6m EUR

+13% Y-o-Y

Gross margin

42.0%
65.3m EUR
+17% Y-o-Y

Operating result

22.2%
34.5m EUR
+44% Y-o-Y

Net result

0.69 EPS
27.8m EUR
+34% Y-o-Y

Oper. cash flow

(before wcap change)
47.0m EUR
+32% Y-o-Y

Net cash
47.4m EUR

Outlook

Melexis expects sales in the second quarter of 2021 in the range of 155-160 million euro. For the full year 2021, Melexis expects a sales growth between 22% and 25%, with a gross profit margin of 41% and an operating margin of 21% at the midpoint of the sales guidance, all taking into account a EUR/USD exchange rate of 1.21.

Profit & loss

Q1 2021 versus Q1 2020 versus Q4 2020

P&L account (in million EUR)	Q1 2021	% of Sales	Q1 2020	% of Sales	Q4 2020	% of Sales
Sales	155.6	100.0%	138.2	100.0%	147.4	100.0%
Cost of goods sold	-90.3	-58.0%	-82.1	-59.4%	-89.1	-60.5%
Gross margin	65.3	42.0%	56.0	40.6%	58.3	39.5%
R&D	-19.7	-12.7%	-20.5	-14.9%	-20.2	-13.7%
G&A	-7.6	-4.9%	-7.8	-5.7%	-8.6	-5.9%
Selling	-3.4	-2.2%	-3.7	-2.7%	-3.6	-2.5%
EBIT	34.5	22.2%	24.0	17.4%	25.8	17.5%
Net financial result	-2.1	-1.4%	-0.4	-0.3%	1.2	0.8%
Income taxes	-4.6	-3.0%	-2.8	-2.0%	-3.0	-2.0%
Net profit	27.8	17.8%	20.7	15.0%	24.0	16.3%
Earnings per share	0.69		0.51		0.59	

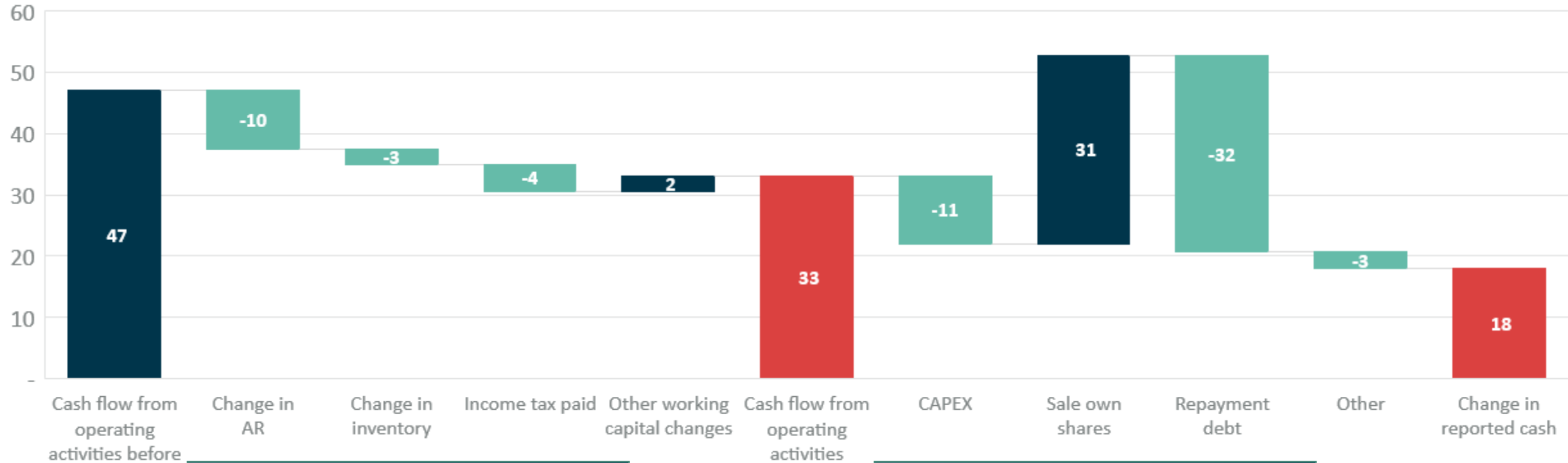
Balance sheet

Q1 2021 versus Q1 2020 versus Q4 2020

Balance Sheet (in million EUR)	Q1 2021	Q1 2020	Q4 2020
Total assets	464.6	442.9	433.4
Current assets			
Cash	76.9	51.1	58.9
Inventory	123.8	129.9	123.5
A/R Trade	74.7	69.1	65.1
Non-current assets	171.3	178.0	170.0
Shareholders' equity	373.9	319.6	314.8
Interest bearing debt	30.0	62.0	62.0
Long term	30.0	62.0	62.0
Short term	0.0	0.0	0.0

Q1 2021 cash flow

MIn. EUR

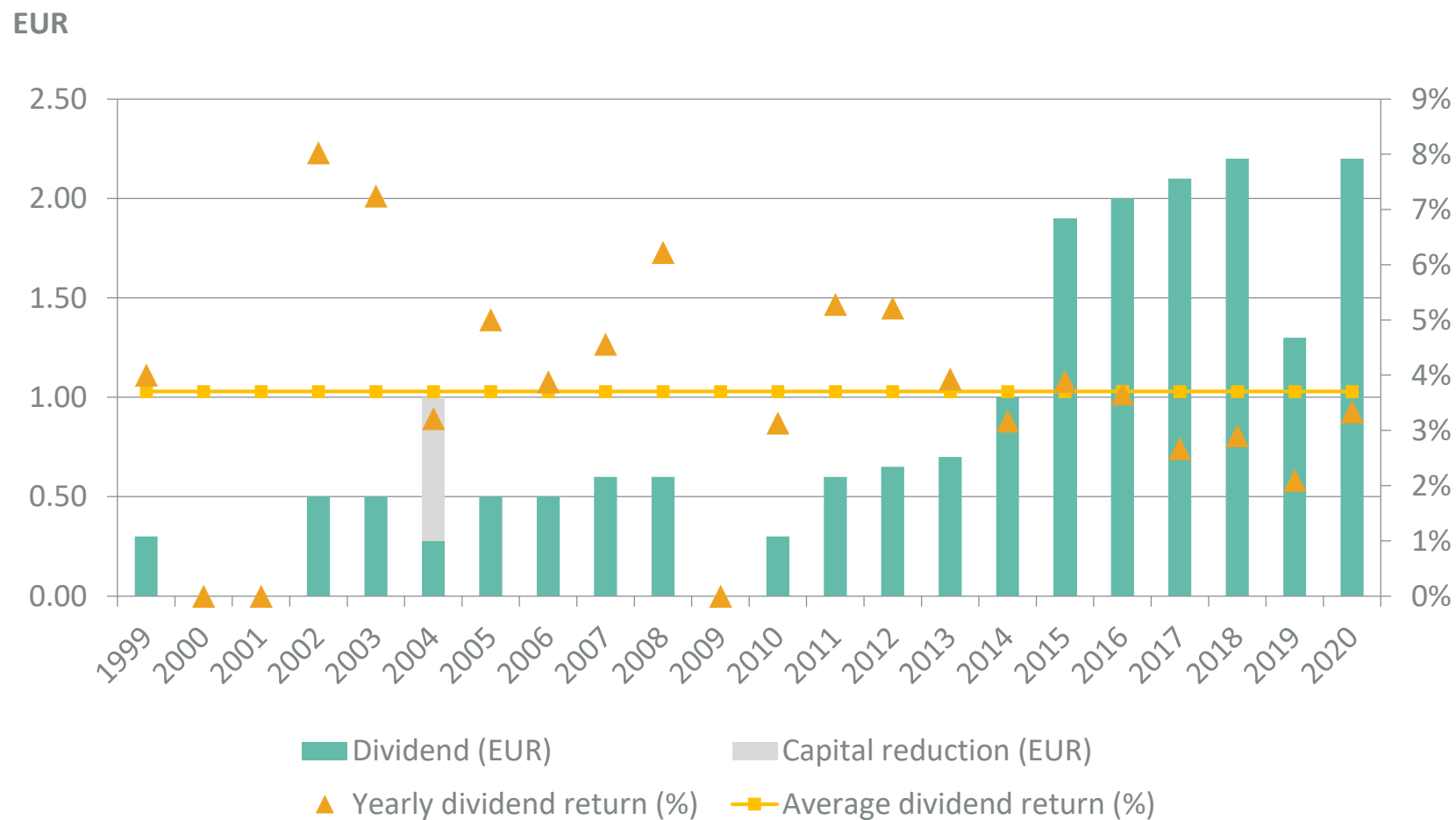


Free cash flow of 26m EUR in 1Q21 (13m EUR in 1Q20)

Proceeds from the sale of own shares were used to pay back debt

Dividend yield

Based on average share price



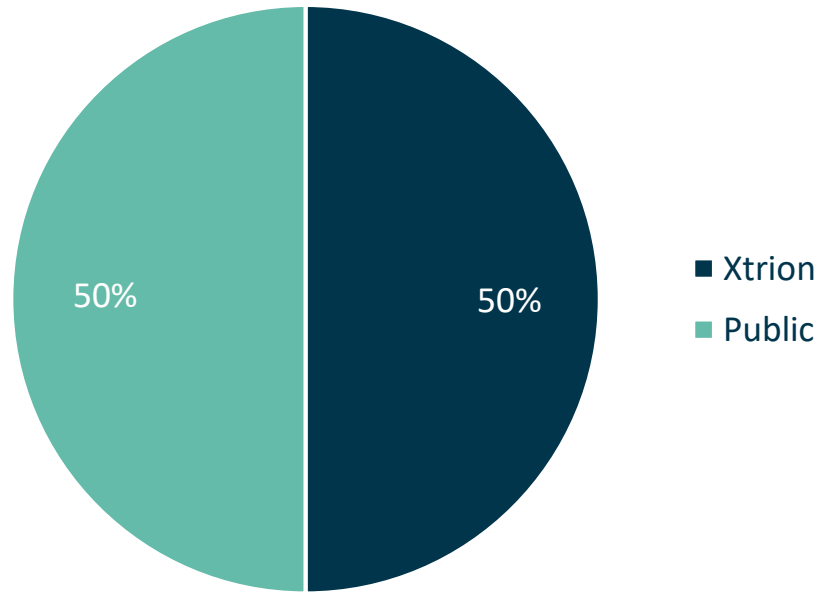
Gross dividend per share (EUR)

(*) 2004	1.00
2005	0.50
2006	0.50
2007	0.60
2008	0.60
2009	0.00
2010	0.30
2011	0.60
2012	0.65
2013	0.70
2014	1.00
2015	1.90
2016	2.00
2017	2.10
2018	2.20
2019	1.30
(**) 2020	2.20

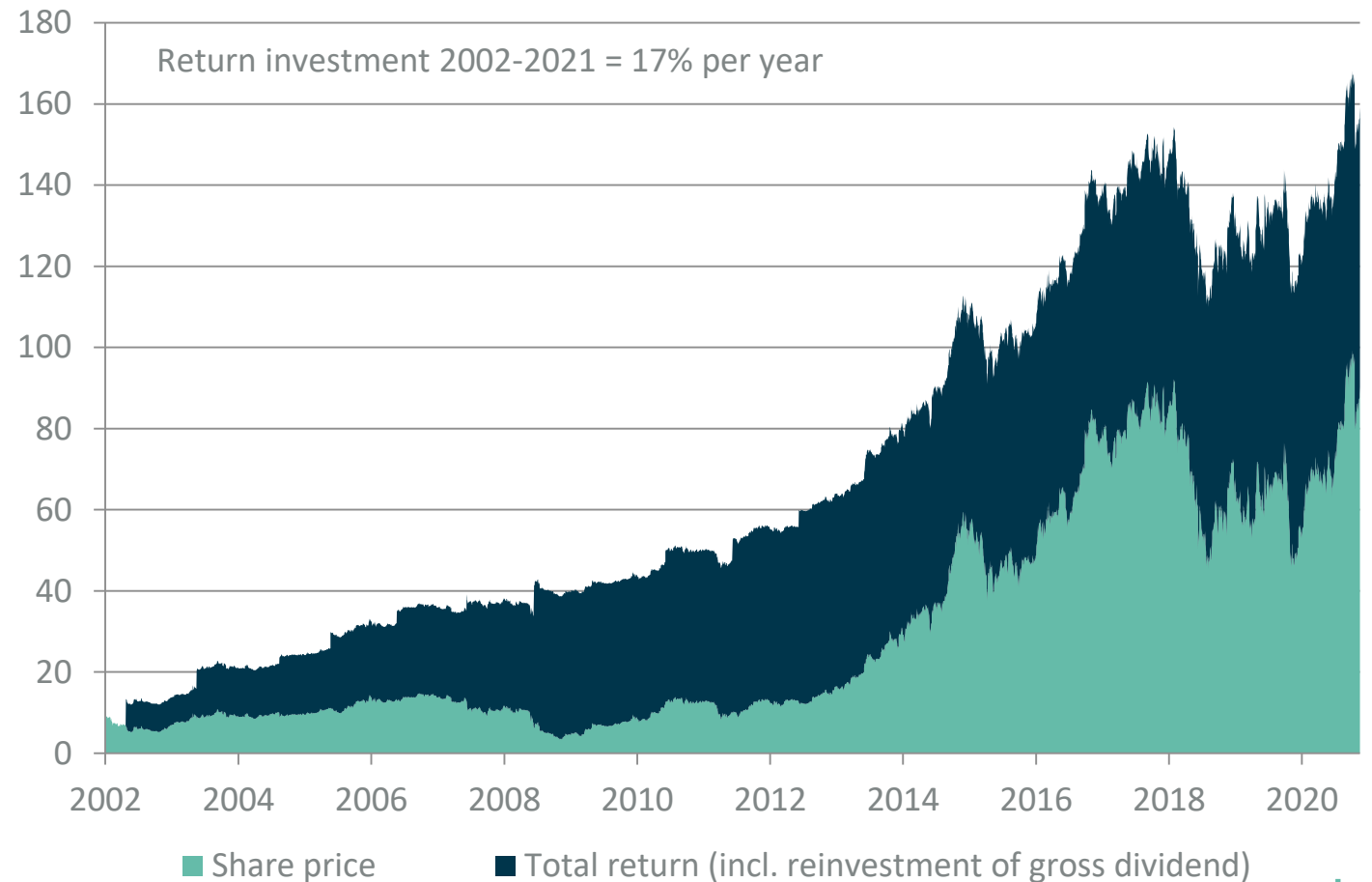
(*) incl. 0.72 cap.decr
 (**) 0.90 final dividend payable as from May 17, 2021

Shareholders structure & shareholder return

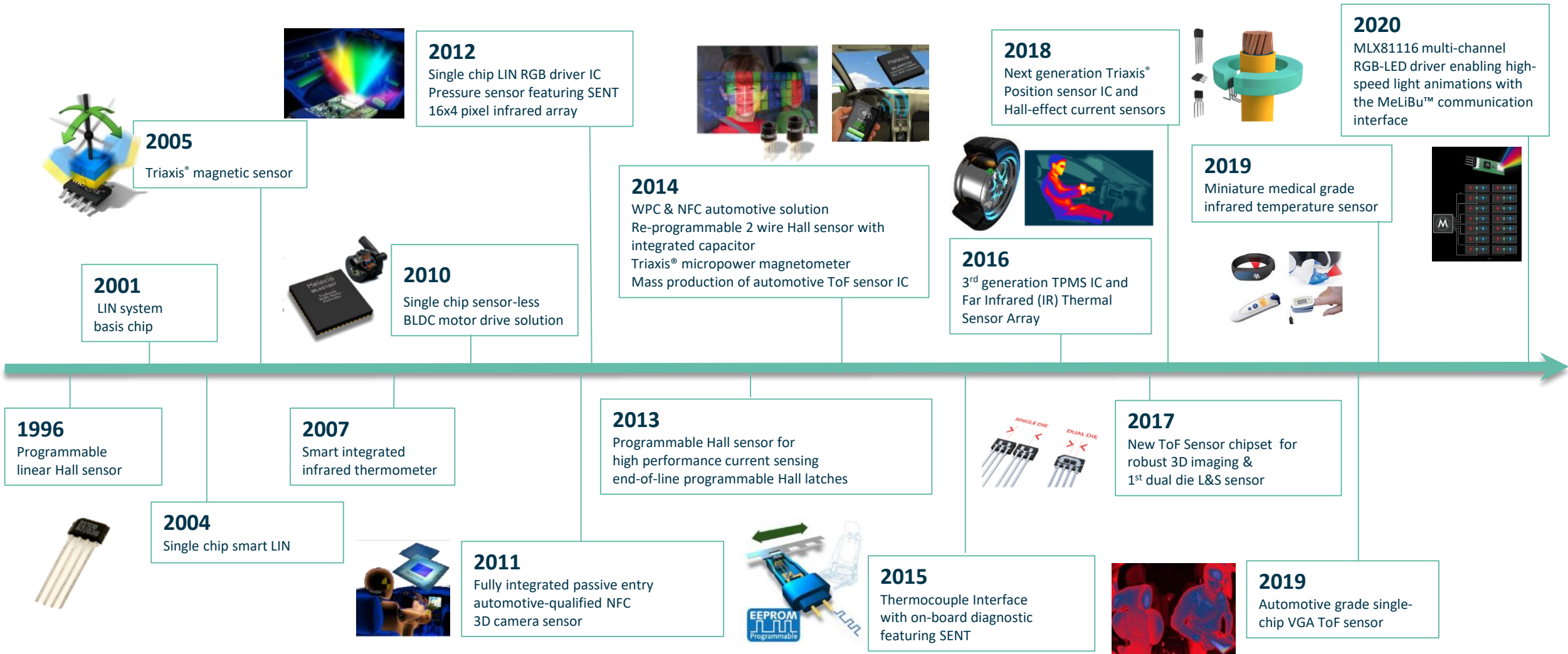
Shareholder structure on
31 Mar 2021



Shareholder return
2002-2021



Industry firsts from Melexis



Melexis Investor Relations

Karen van Griensven

CFO

Geert Reynders

Executive Advisor to the Board of Directors

Valerie Kerfs

IR Professional

investor@melexis.com

+32 (0)13 67 07 79