

MLX92214

3-WIRE GENERAL PURPOSE LATCH



The hammerhead shark is able to detect electronic signals of no more than half a billionth of a volt. The process uses specialized electroreceptors to detect and locate the source of an external electric field in its environment. What better animal to reflect our sensing capacities?

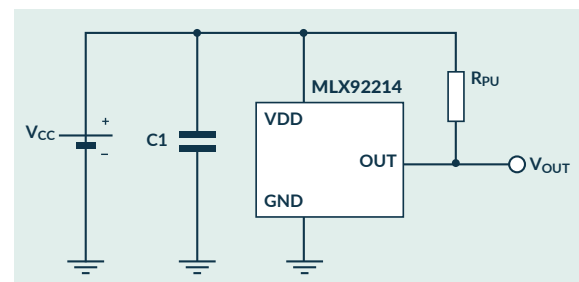
3-WIRE GENERAL PURPOSE LATCH FOR POWER TOOLS, PC, SERVERS AND HOME APPLIANCE APPLICATIONS

The MLX92214 is a Hall-effect latch bringing a robust but cost-effective solution for motor control, especially adapted for power tools, PCs, servers and home appliance applications. The MLX92214' low operating voltage as well as its low power consumption ensure the best use of the application battery. Additionally, its design for a standalone PCB will minimize the effort of the integration in the module.

KEY FEATURES

- ✓ Cost-effective solution for motor control
- ✓ Hall elements replacement
- ✓ Robust design: latest generation for motor commutation
- ✓ Low voltage supply (2.5 V - 5.5 V)
- ✓ Low power switch 2.1 mA
- ✓ ESD capability 6 kV

APPLICATION CIRCUIT



KEY APPLICATIONS

- ✓ Low power applications
- ✓ BLDC motor commutation
- ✓ Solid-state latch
- ✓ Index counting



MAGNETIC BEHAVIOR

