

INSTALLATION GUIDE

PTC04

Contents:

Installation procedure of the PTC04:	2
<i>Installation from CD:</i>	2
STEP 1: Start the Autorun.exe program from the CD.	2
STEP 2: Select the device you want to install.	2
STEP 3: Press Next > to install the module.	3
STEP 4: Select "I accept the agreement. And press Next >	3
STEP 5: Install Melexis Updater? Press Next >	4
STEP 6: Press install.	5
STEP 7: Press Finish to complete the installation.	5
<i>Installation from Package:</i>	6
STEP 1: Put all software modules, except for the firmware, into one directory.	6
STEP 2: Run the installation of the user interface (UI_0xxxxxAAMLX.exe).	6
STEP 3: Press Next > to install the module.	7
STEP 4: Select "I accept the agreement. And press Next >	7
STEP 5: Install Melexis Updater? Press Next >	8
STEP 6: Press install.	9
STEP 7: Press Finish to complete the installation.	9
<i>Separate installation</i>	10
STEP 1: Create a Shortcut to the executable.	10
STEP 2: Open the properties of the Shortcut	10
STEP 3: At the end of the target path you at "/maininstall "	10
STEP 4: To run the installation file, double click on the shortcut in staid of the exe-file.	10
<i>Software Location</i>	10
<i>Start-up the Software</i>	11
Installing the Melexis FTDI-USB Driver package WHQL certified	12
STEP 1: Select the "USB driver" from the Melexis Installer (Autorun.exe) or Run the installation file "MlxFtdiUsbSetup.exe".	12
STEP 2: Press "Next >" to start the installation:	12
STEP 3: Select "I accept this EULA":	13
STEP 4: Press "Next >" to continue:	13
STEP 5: The drivers are installed.	14
STEP 6: Press "Finish" to close the installation.	14
STEP 7: Connect the PTC04 to the USB port.	14
STEP 8: Both drivers are now being installed for the connected PTC04 automatically.	14
Disclaimer	15

Installation procedure of the PTC04:

IMPORTANT: ALL INSTALATIONS HAVE TO BE DONE WITH ADMINISTRATOR RIGHTS! This means you need to have full access on your PC.

During the installation of the Melexis FTDI-USB Driver package (USB driver), the PTC04 USB cable may NOT be connected to the PC!

For the installation of the other software packages, the PTC04 does NOT have to be connected to the PC.

Installation from CD:

If you are installing the package from the CD, please follow the instructions:

STEP 1: Start the Autorun.exe program from the CD.



Figure 1

STEP 2: Select the device you want to install.

This will install the whole package. This means: if you select a MLX device, for example the MLX90251, all packages that are needed for the MLX90251 will be installed including the PTC04 modules. In this case it is not needed to select the PTC04 module afterwards.

Note: The USB driver is not automatically installed with the other packages. If you want to use the USB connection of the PTC04 select the "USB driver". The procedure is described in the chapter: Installing the Melexis FTDI-USB Driver package WHQL certified. The Melexis FTDI-USB Driver package can be installed before or after the installation of the PTC04 software package.

STEP 3: Press Next > to install the module.

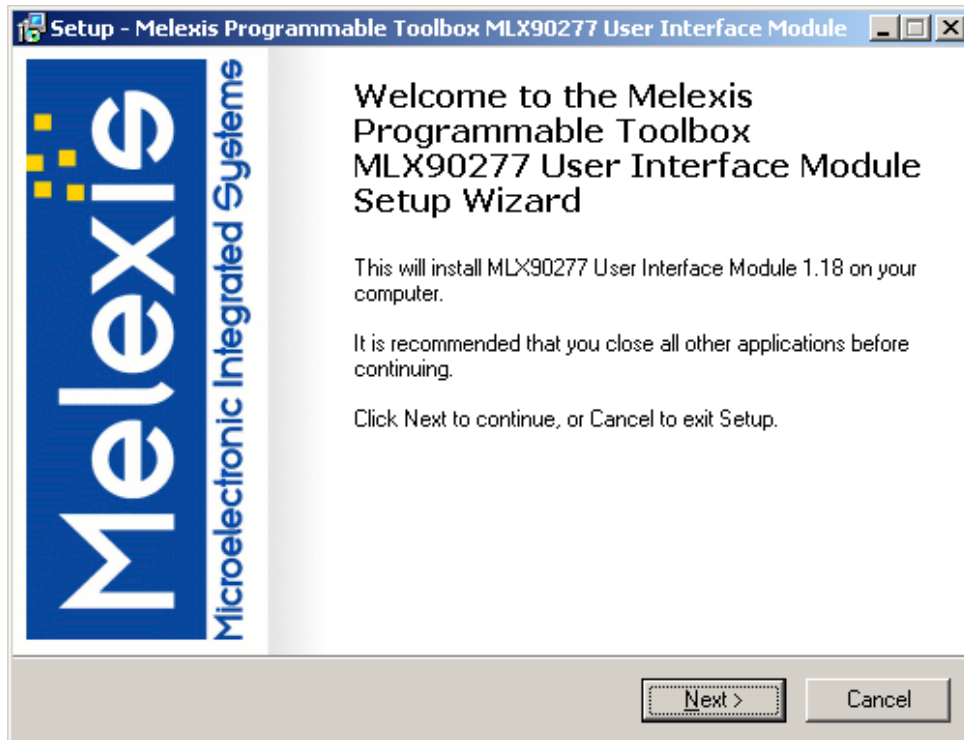


Figure 2

STEP 4: Select "I accept the agreement. And press Next >

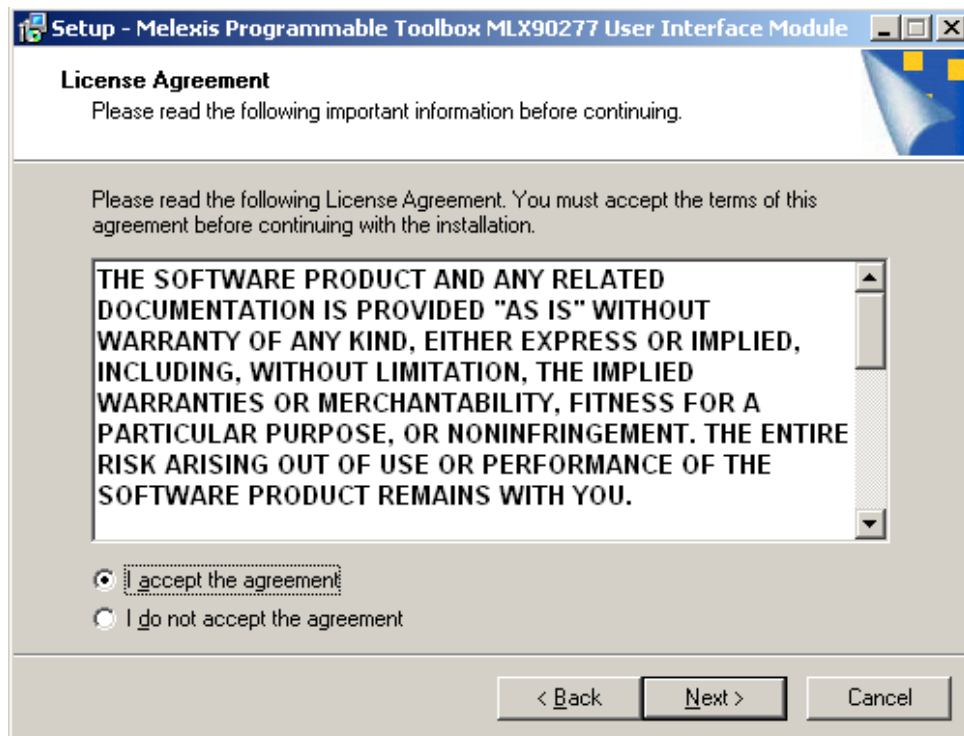


Figure 3

STEP 5: Install Melexis Updater? Press Next >

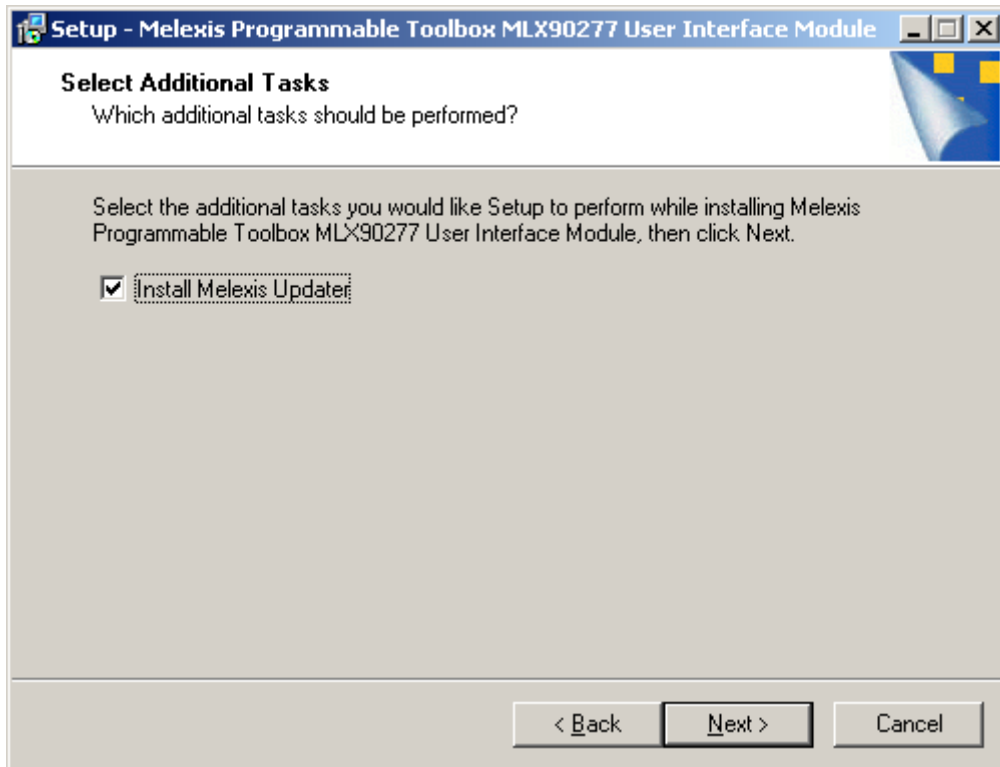


Figure 4

The Melexis Updater is a tool to update the PTC04 software and documentation directly from the Melexis SoftDist server. For the updater, an account is required to get access to the SoftDist server.

STEP 6: Press install.

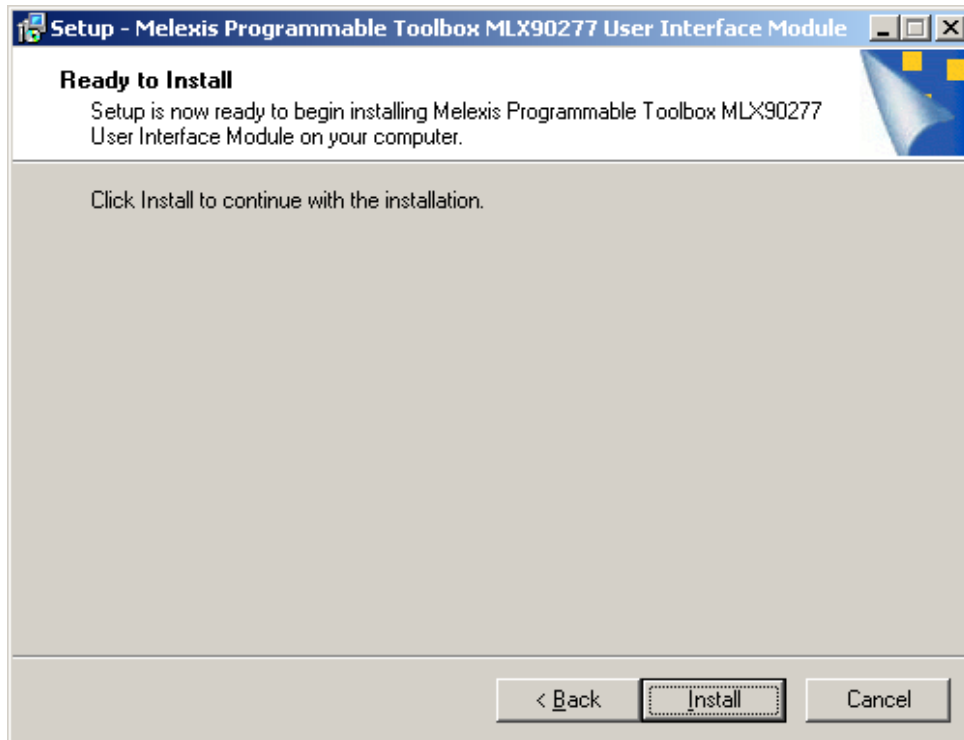


Figure 5

STEP 7: Press Finish to complete the installation.

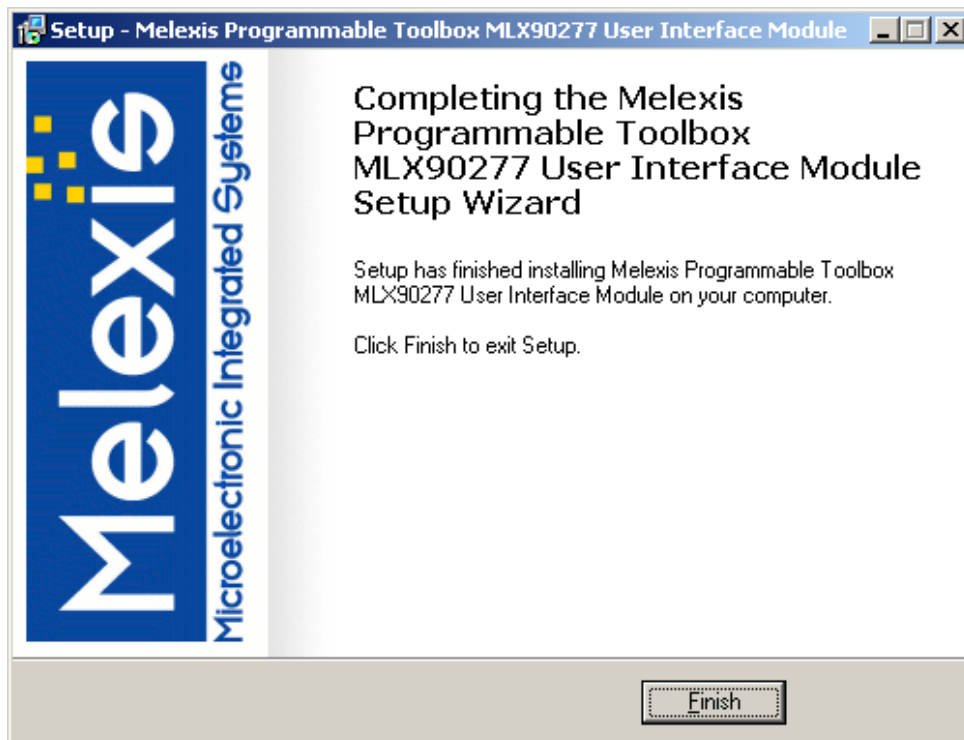


Figure 6

Installation from Package:

If you are not installing the package from the CD, please follow these instructions:

STEP 1: Put all software modules, except for the firmware, into one directory.
The location of the directory on your PC is not imported.

There are 6 software modules.

- 2 modules for the MLX product: (xxxxx = Melexis product number.)
 - MLXxxxxx user interface (UI_0xxxxxAAMLX.exe)
 - MLXxxxxx PSF (PSF0xxxxxAAMLX.exe)

For example:
MLX90251 user interface (UI_090251AAMLX.exe)
MLX90251 PSF (PSF090251AAMLX.exe)
- 2 modules for the PTC04:
 - PTC04 user interface (UI_0PTC04AAMLX.exe)
 - PTC04 PSF (PSF0PTC04AAMLX.exe)
- The MPT and the Melexis updater:
 - MPT application (MPTApp.exe)
 - Melexis Updater (MelexisUpdaterSetup.exe) - optional, the installation can be omitted. If this file is not in the directory, a warning is given and the installation is skipped.

STEP 2: Run the installation of the user interface (UI_0xxxxxAAMLX.exe).

For example: UI_090251AAMLX.exe.

This will install all other needed modules of the packages. The module is only installed if the previous installation has a lower revision number.

STEP 3: Press Next > to install the module.

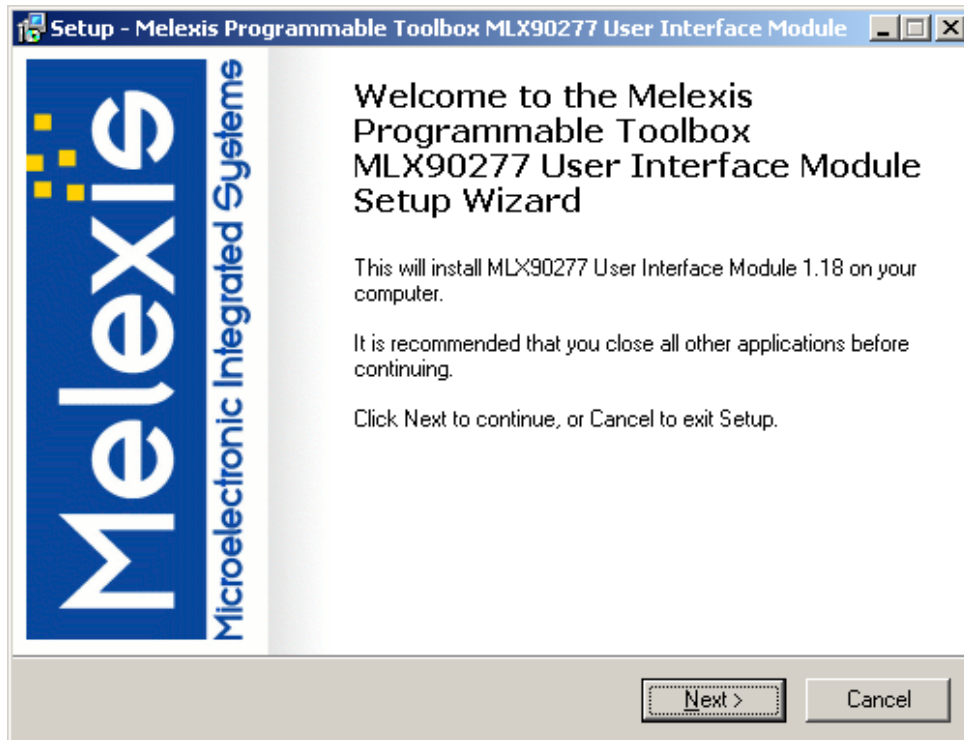


Figure 7

STEP 4: Select "I accept the agreement. And press Next >

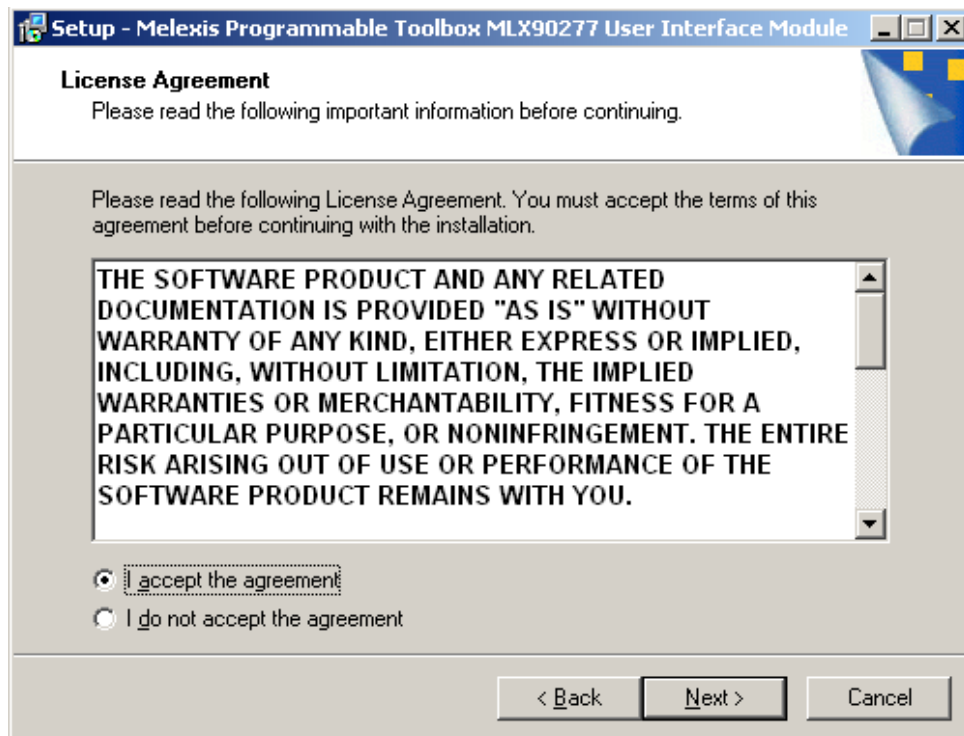


Figure 8

STEP 5: Install Melexis Updater? Press Next >

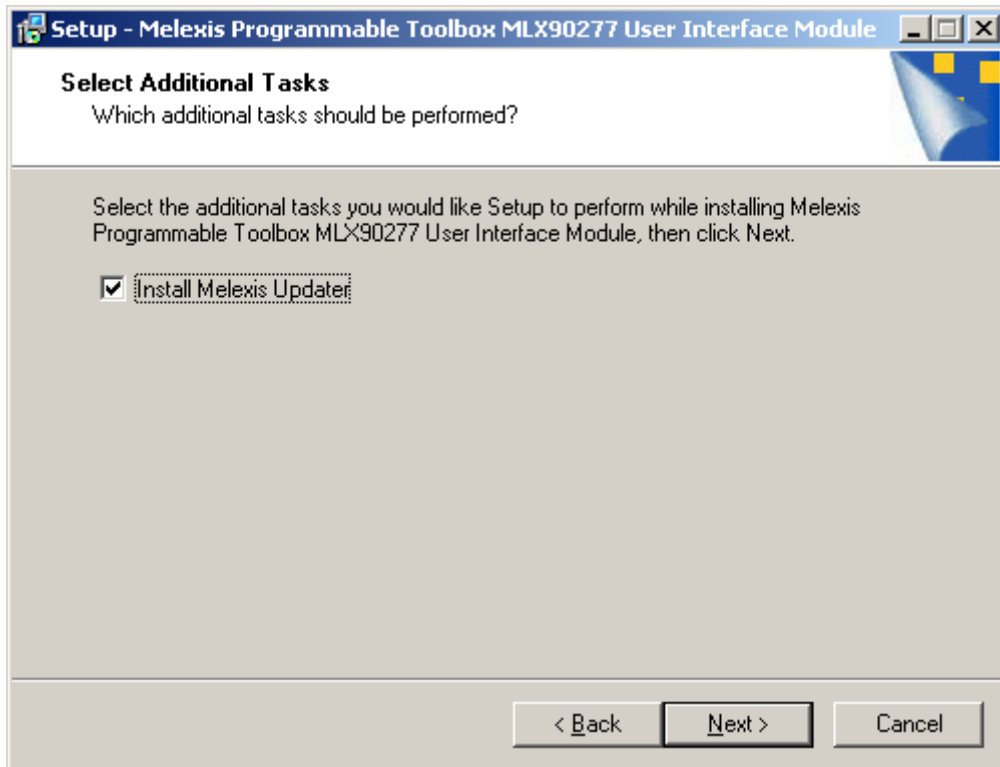


Figure 9

The Melexis Updater is a tool to update the PTC04 software and documentation directly from the Melexis SoftDist server. For the updater, an account is required to get access to the SoftDist server.

Note: If the installation file is not included in the package, do not select to install.

STEP 6: Press install.

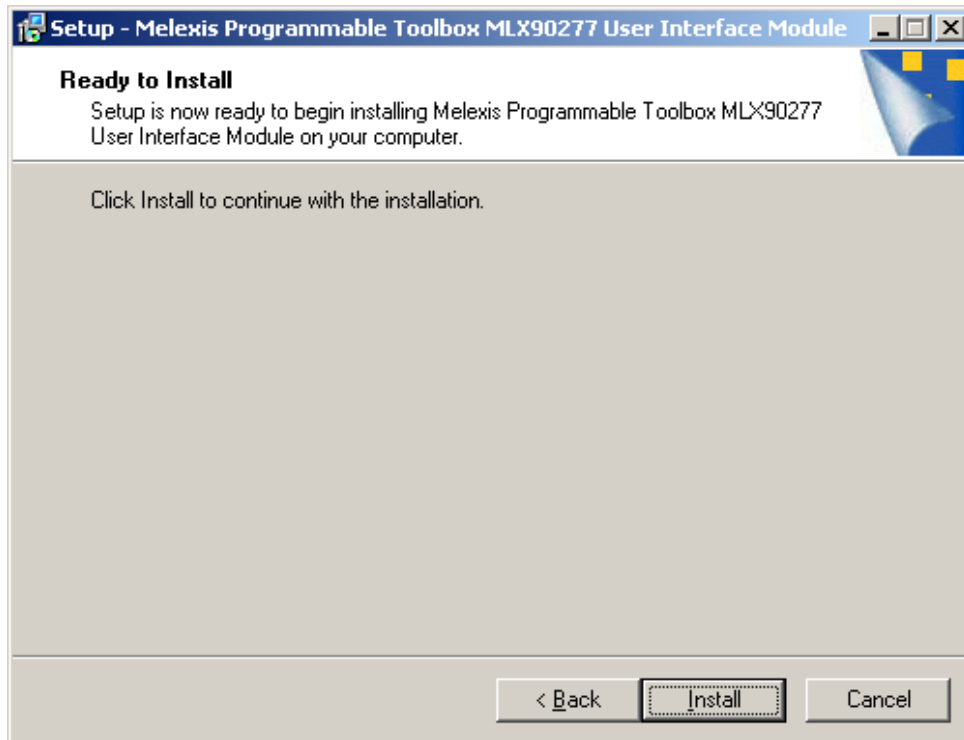


Figure 10

STEP 7: Press Finish to complete the installation.

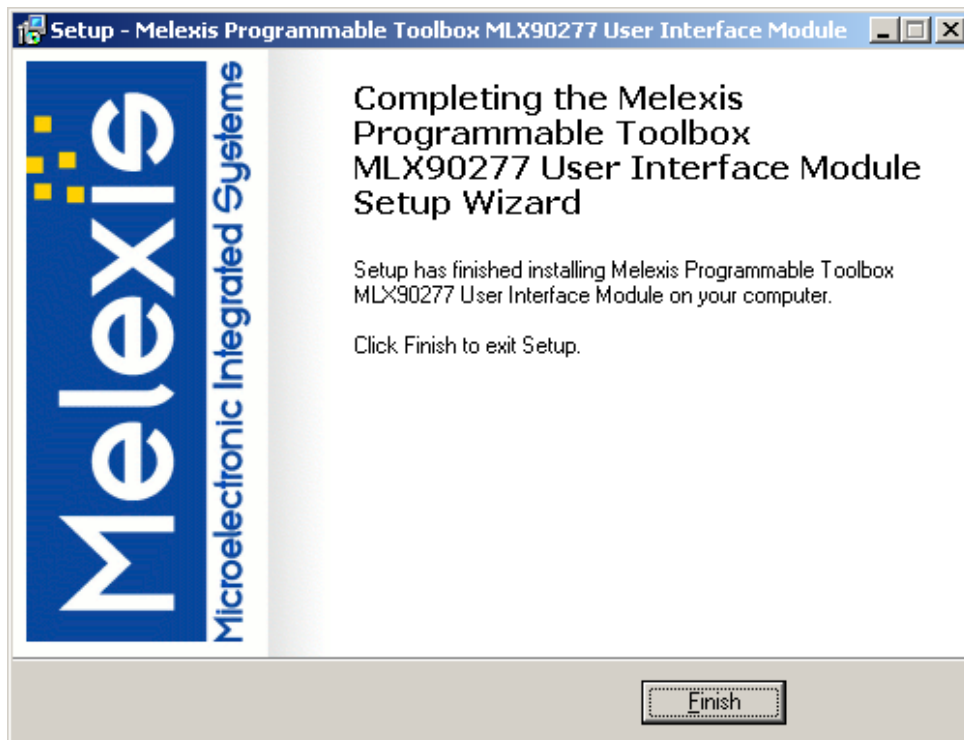


Figure 11

Separate installation

All the installations can be started separately, one by one, by running the corresponding installation program with the parameter /maininstall.

For example: *PSF090251AAMLX.exe /maininstall* will install only the PSF for MLX90251.

Procedure:

- STEP 1: Create a Shortcut to the executable.
- STEP 2: Open the properties of the Shortcut
- STEP 3: At the end of the target path you at “ /maininstall “
- STEP 4: To run the installation file, double click on the shortcut in staid of the exe-file.

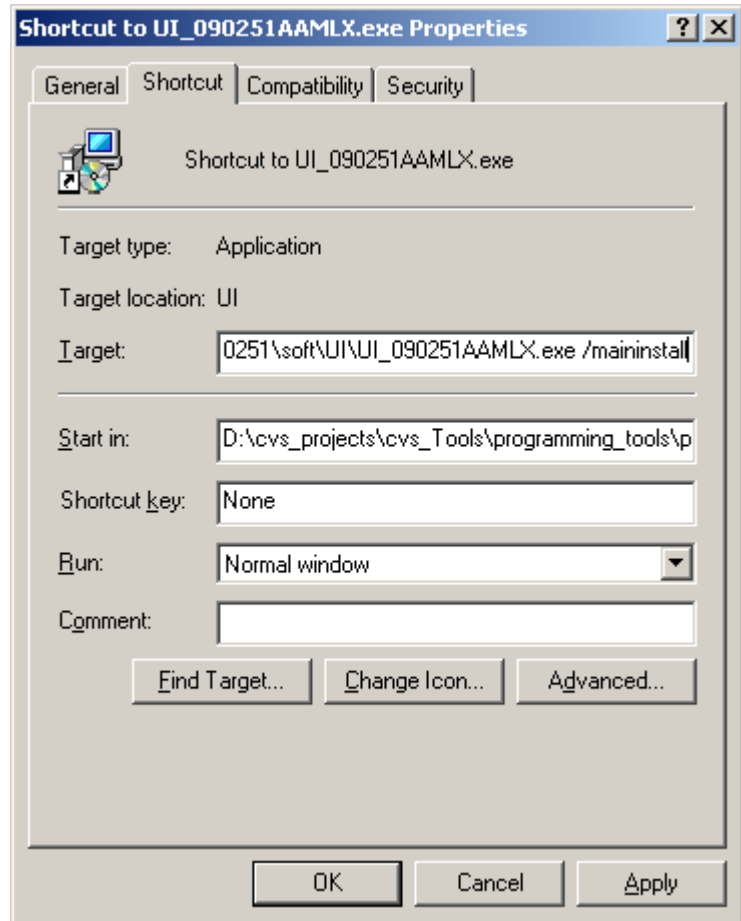


Figure 12

Software Location

The software of the PTC04 is installed on C:\Program Files\Melexis\...

All the Type Libraries of the PTC04 are 32bit (x86) based. So for 64bit operating systems the software is installed on C:\Program Files (x86)\Melexis\...

For recent projects you will also find the firmware and examples of the project in this directory.

The ini-files created and used by the software are stored in the Application Data directory of windows. C:\Documents and Settings\...\Application Data\Melexis

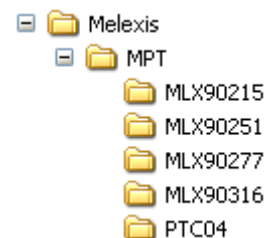
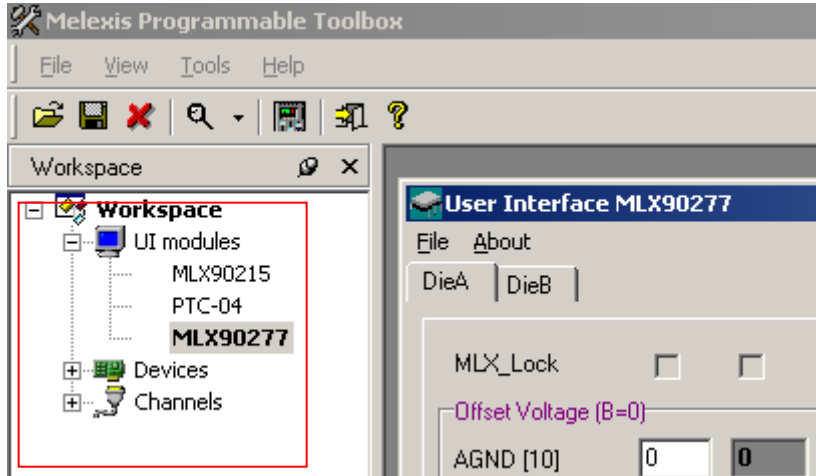


Figure 13

Start-up the Software

If you are using the USB port, and it is not yet installed, do it first. For instructions on the USB installation, refer to: Installation_Guide_USB.pdf.

After the installation of the software, connect the PTC04 programmer. Then start-up the software: Start → all programs → Melexis → Melexis Programmable Toolbox → Melexis Programmable Toolbox.



All installed UI's are listed at the left side of the MPT. Select the desired MLX product from the list to open the UI. When it opened successfully, the text becomes highlighted.

Figure 14

Note: If you select the MLX product again after you opened the UI, double click on the bold text, the revision of that UI is shown.

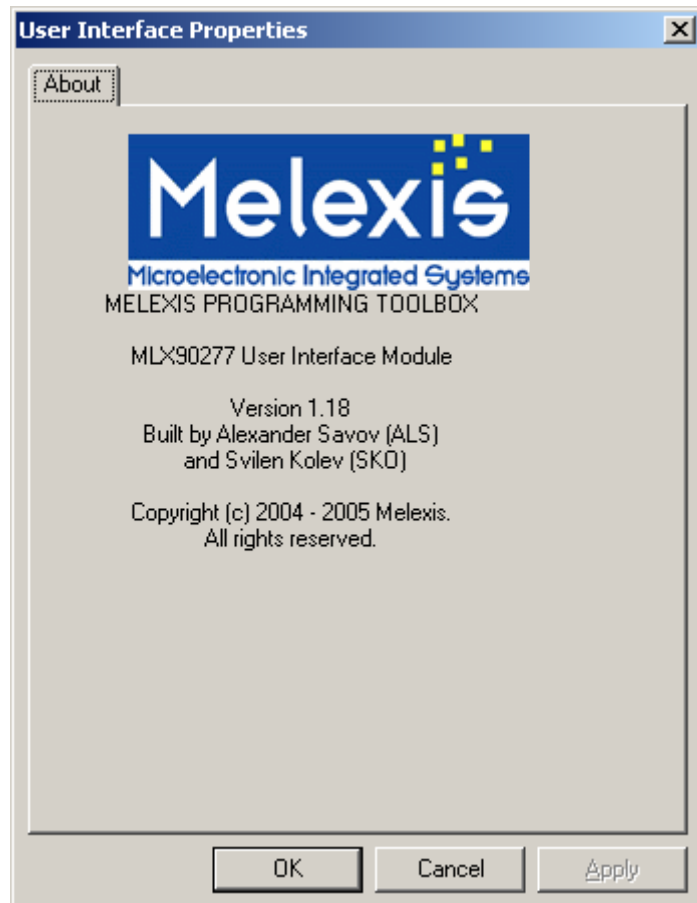


Figure 15

Installing the Melexis FTDI-USB Driver package WHQL certified

This FTDI-USB driver is WHQL certified. The USB Driver consists out of 2 drivers: the USB driver and a second USB ↔ Serial driver. The second driver is a virtual COM port. With this driver the USB port acts like a COM port. Both drivers are installed at once.

For this USB driver all PTC04's have to be disconnected from the PC during installation.

STEP 1: Select the "USB driver" from the Melexis Installer (Autorun.exe) or Run the installation file "MlxFtdiUsbSetup.exe".



Figure 16: STEP 2

STEP 2: Press "Next >" to start the installation:

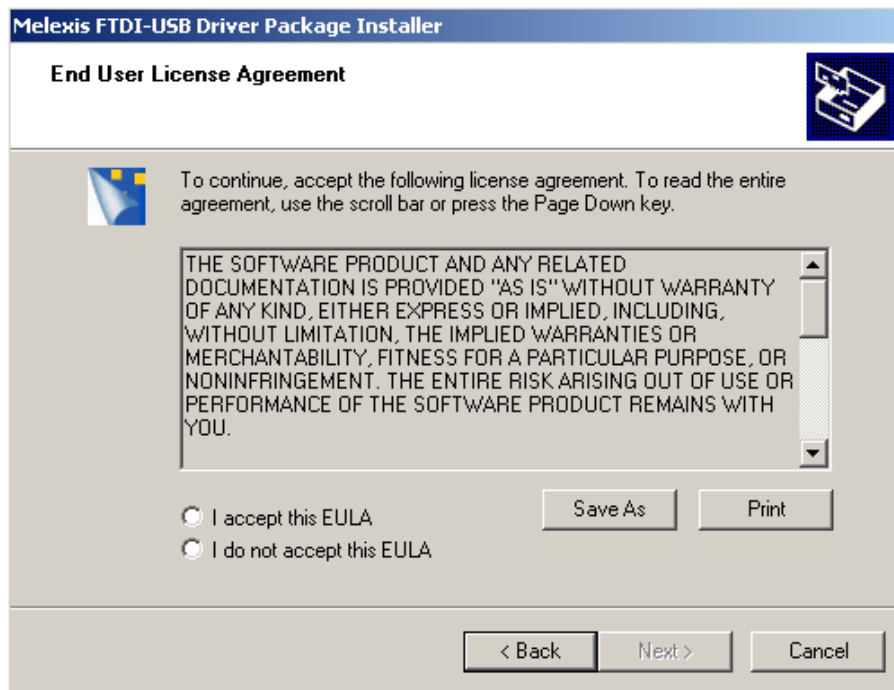


Figure 17: STEP 3

STEP 3: Select "I accept this EULA":

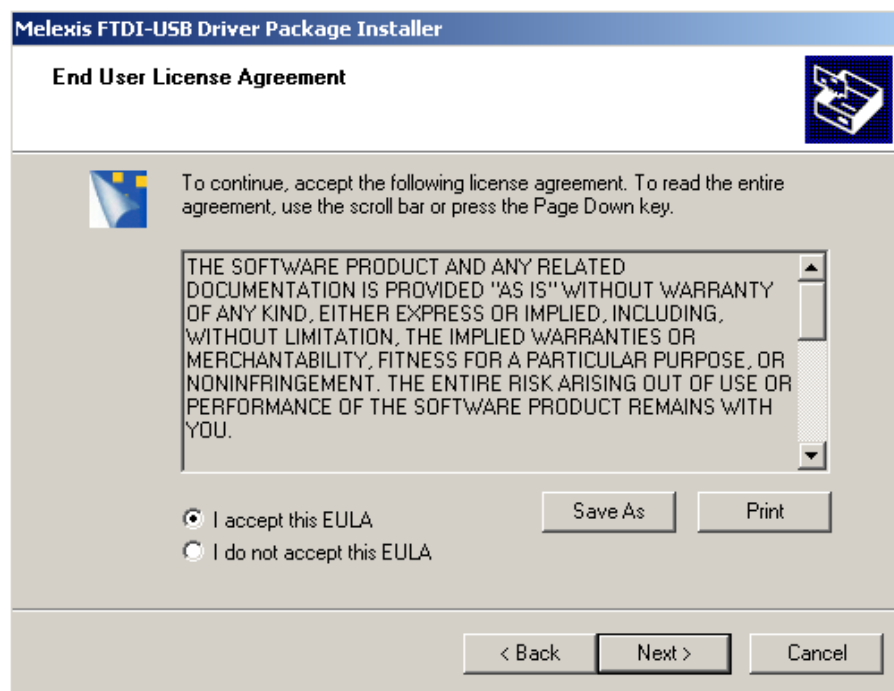


Figure 18: STEP 4

STEP 4: Press "Next >" to continue:



Figure 19: STEP 5

STEP 5: The drivers are installed.

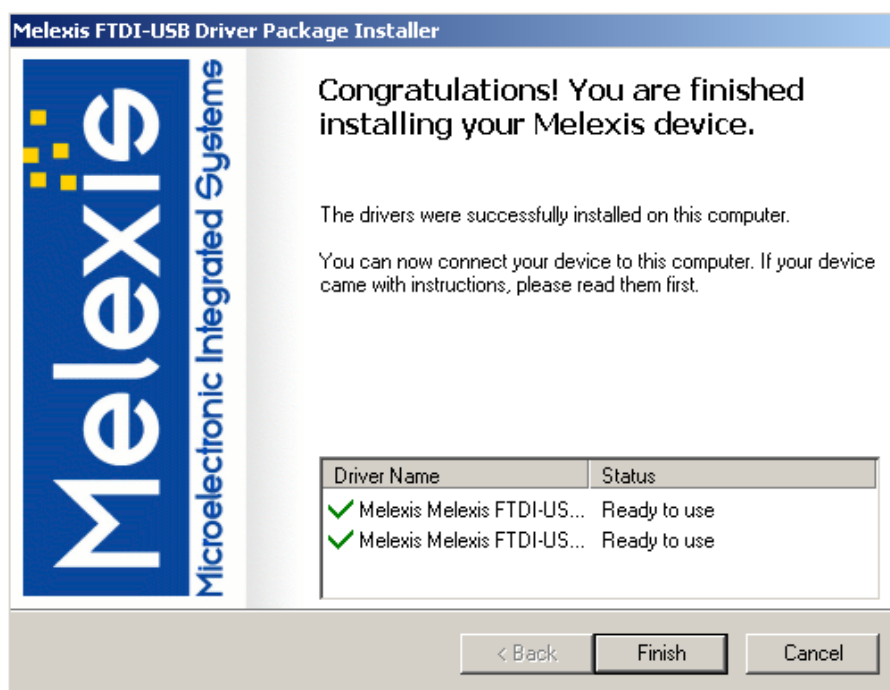


Figure 20: STEP 6

STEP 6: Press "Finish" to close the installation.

STEP 7: Connect the PTC04 to the USB port.

STEP 8: Both drivers are now being installed for the connected PTC04 automatically.

Note: If you do not have administrator rights on your PC the Windows might request for the administrator password.

Disclaimer

Devices sold by Melexis are covered by the warranty and patent indemnification provisions appearing in its Term of Sale. Melexis makes no warranty, express, statutory, implied, or by description regarding the information set forth herein or regarding the freedom of the described devices from patent infringement. Melexis reserves the right to change specifications and prices at any time and without notice. Therefore, prior to designing this product into a system, it is necessary to check with Melexis for current information. This product is intended for use in normal commercial applications. Applications requiring extended temperature range, unusual environmental requirements, or high reliability applications, such as military, medical life-support or life-sustaining equipment are specifically not recommended without additional processing by Melexis for each application.

The information furnished by Melexis is believed to be correct and accurate. However, Melexis shall not be liable to recipient or any third party for any damages, including but not limited to personal injury, property damage, loss of profits, loss of use, interrupt of business or indirect, special incidental or consequential damages, of any kind, in connection with or arising out of the furnishing, performance or use of the technical data herein. No obligation or liability to recipient or any third party shall arise or flow out of Melexis' rendering of technical or other services.

© 2013 Melexis NV. All rights reserved.

For the latest version of this document, go to our website at
www.melexis.com

For additional information contact Melexis Direct:

Europe, Africa, Asia:
Phone: +32 13 670 495
E-mail: sales_europe@melexis.com

America:
Phone: +1 603 204 2900
E-mail: sales_usa@melexis.com

ISO/TS 16949 and ISO14001 Certified